

GROUND FORCE

07 & UP GM 1500 PICKUP 2.0" FRONT 1.0" REAR LEVELING KIT INSTALLATION

READ INSTRUCTIONS/WARNINGS COMPLETELY THROUGH BEFORE STARTING.
FAILURE TO ADHERE TO THE INSTRUCTIONS WILL VOID ANY GROUND FORCE WARRANTY
IT IS RECOMMENDED THAT INSTALLATION BE DONE BY A QUALIFIED MECHANIC.

REPLACE ALL STOCK PARTS THAT ARE DAMAGED OR WORN.

INTERMIXING OF PARTS IS NOT RECOMMENDED AND WILL VOID THE WARRANTY.

ALWAYS WEAR EYE PROTECTION.

ALWAYS USE PROPERLY RATED SAFETY STANDS WHENEVER A PROCEDURE REQUIRES
YOU TO BE UNDER A VEHICLE. KNOW AND FOLLOW ALL SAFE WORK PRACTICES TO
AVOID SERIOUS INJURY OR DEATH.

CHECK TO SEE THAT ALL PARTS LISTED ARE INCLUDED.

2-.750" THICK STRUT SPACERS	1- INSTRUCTION SHEET
2-.250" THICK STRUT SPACERS	4- M10 HEX BOLTS
4- M10 LOCK NUTS	8- M10 WASHERS
1- GROUND FORCE WARNING DECAL	
8- U-BOLT HI HEX NUTS	4- U-BOLTS
2- LEVELING BLOCKS	8- U-BOLT WASHERS

MEASURE AND DOCUMENT THE VEHICLE HEIGHT FROM FLOOR TO FENDER LIP.

LF _____ RF _____ LR _____ RR _____

FRONT STRUT SPACER INSTALLATION PROCEDURE.

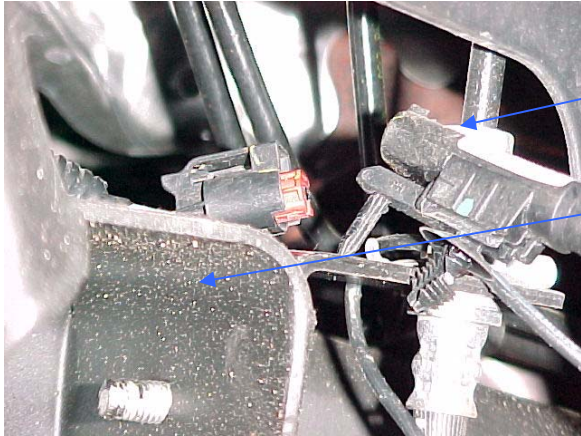
NOTE: THIS KIT HAS TWO DIFFERENT SIZE FRONT SPACERS. TO ACHIEVE 1.5" LEVELING
USE THE .750" THICK SPACER ONLY, TO ACHIEVE 2.0" LEVELING USE BOTH THE .750"
THICK AND THE .250" THICK SPACERS. (MOST VEHICLES WILL NEED THE MAX 2.0" SETUP).

1. BEFORE GETTING UNDER VEHICLE, JACK THE FRONT OF VEHICLE UP AND PLACE STANDS UNDER THE FRAME RAILS. LOWER THE VEHICLE ONTO JACK STANDS AND MAKE SURE STANDS ARE SECURELY HOLDING THE VEHICLE.
2. REMOVE TIRE AND WHEEL ASSEMBLY.
3. DISCONNECT THE ANTILOCK BRAKE WIRE FROM THE UPPER CONTROL ARM.



ANTILOCK BRAKE
WIRE UNCLIPPED
FROM THE TOP OF
THE UPPER
CONTROL ARM.

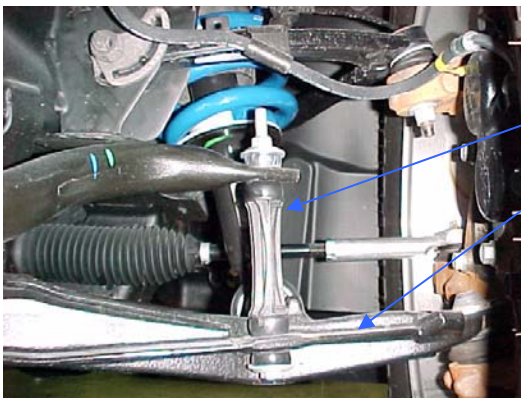
- DISCONNECT THE ANTILOCK BRAKE WIRE FROM THE CONNECTOR LOCATED BEHIND THE UPPER CONTROL ARM MOUNTING POCKET.



ANTILOCK WIRE
CONNECTOR BEING
DISCONNECTED.

REAR UPPER CONTROL
ARM MOUNTING
POCKET.

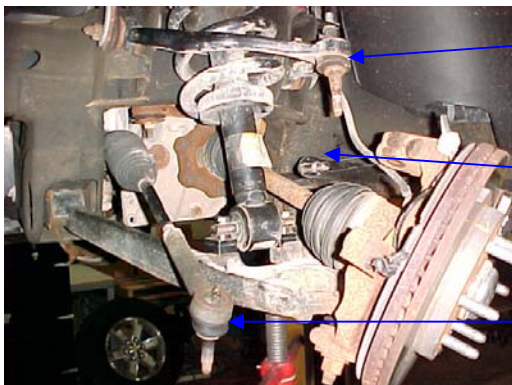
- SUPPORT THE LOWER CONTROL ARM AND REMOVE THE SWAY BAR CONNECTING LINK FROM THE SWAY BAR AND LOWER CONTROL ARM ON BOTH SIDES OF THE VEHICLE, SAVE HARDWARE.



CONNECTING LINK

LOWER CONTROL
ARM

- LOOSEN THE TIE ROD NUT, TAP ON THE SPINDLE WITH A Mallet TO POP THE TIE ROD LOOSE FROM THE SPINDLE. REMOVE THE OUTER TIE ROD FROM THE SPINDLE, SAVE NUT.
- SUPPORT THE LOWER CONTROL ARM, LOOSEN THE UPPER BALL JOINT NUT, TAP ON THE SPINDLE WITH A Mallet TO POP THE UPPER BALL JOINT LOOSE FROM THE SPINDLE. REMOVE THE UPPER BALL JOINT NUT AND REMOVE THE UPPER BALL JOINT FROM THE SPINDLE, SAVE THE BALL JOINT NUT FOR REASSEMBLY.
- SECURE THE TOP OF THE SPINDLE IN TOWARD THE VEHICLE SO THE $\frac{1}{2}$ SHAFT DOES NOT COME APART OR COME OUT OF THE FRONT DIFFERENTIAL.



UPPER BALL JOINT
REMOVED FROM
SPINDLE.

WIRE HOLDING THE TOP
OF SPINDLE IN TOWARD
VEHICLE, TO KEEP THE
AXLE $\frac{1}{2}$ SHAFT IN PLACE.

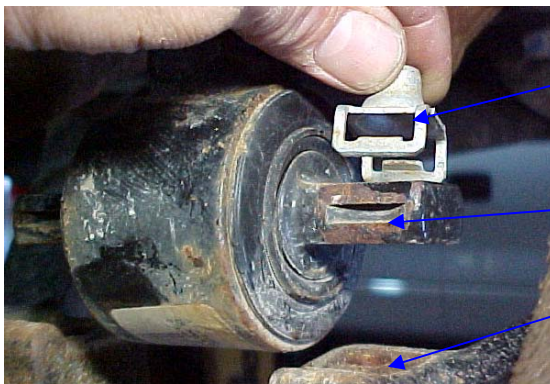
TIE ROD REMOVED
FROM SPINDLE.

9. LOOSEN THE UPPER THREE OUTER NUTS ATTACHING THE STRUT ASSEMBLY TO THE VEHICLE FRAME. IT IS NOT NECESSARY TO REMOVE THESE NUTS. **DO NOT LOOSEN THE CENTER STRUT TO UPPER MOUNT NUT.**



18 MM WRENCH
LOOSENING THE THREE
UPPER STRUT
MOUNTING BOLTS.

10. REMOVE THE TWO BOLTS HOLDING THE LOWER STRUT TO THE LOWER CONTROL ARM.
11. REMOVE THE FACTORY CLIPS FROM THE BOTTOM OF THE STRUT AND DISCARD.

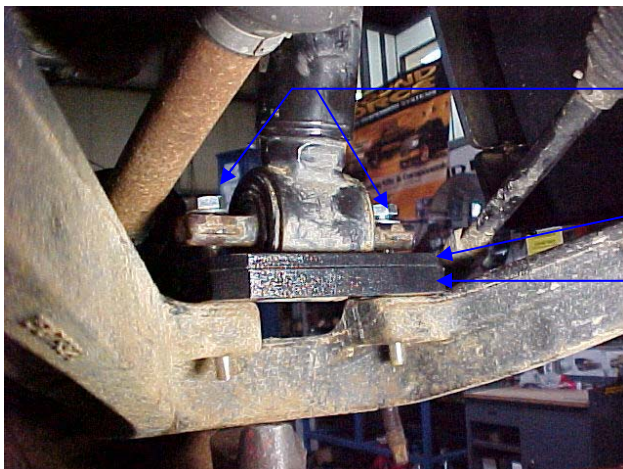


FACTORY BOLTS AND
CLIPS BEING REMOVED
FROM THE STRUT
LOWER MOUNT.

LOWER STRUT MOUNT

LOWER CONTROL ARM
STRUT MOUNT

12. LOCATE AND INSTALL THE NEW SUPPLIED SPACER/SPACERS (.750" THICK FOR 1.50" LEVELING OR .750" AND .250" TOGETHER FOR 2.0" LEVELING) BETWEEN THE TOP OF THE LOWER CONTROL ARM STRUT MOUNT AND THE BOTTOM OF THE STRUT MOUNT. **REFER TO PHOTO BELOW. (MOST VEHICLES WILL NEED THE MAX 2.0" SETUP)**
13. INSTALL THE SUPPLIED M-10 HEX BOLTS (WITH WASHERS UNDER THE HEADS) DOWN THROUGH THE STRUT, SUPPLIED SPACERS AND THROUGH THE LOWER CONTROL ARM. **NOTE:** YOU MAY HAVE TO PUSH THE SPINDLE SLIGHTLY REWARD IN ORDER TO INSTALL THE REAR BOLT DOWN ALONG THE AXLE SHAFT.



NEW M10 HEX BOLTS BEING
INSTALLED.

.250" THICK SPACER BEING
INSTALLED.

.750 THICK SPACER BEING
INSTALLED.

14. INSTALL THE SUPPLIED M10 FLAT WASHERS AND THE SUPPLIED M10 LOCK NUTS TO THE LOWER STRUT BOLTS AND TORQUE TO 38 FT. LBS.
15. TIGHTEN THE THREE UPPER STRUT TO VEHICLE FRAME BOLTS, AND TORQUE TO 37 FT LBS.
16. JACK THE LOWER CONTROL ARM UP SLIGHTLY, LINEUP AND INSTALL THE UPPER BALL JOINT STUD DOWN INTO THE SPINDLE AND INSTALL THE STOCK UPPER BALL JOINT NUT AND TORQUE TO 37 FT LBS.
17. REPEAT SPACER INSTALLATION TO THE OTHER SIDE OF VEHICLE.
18. REINSTALL THE TIE RODS TO THE SPINDLES AND TORQUE TO 44 FT LBS.
19. REINSTALL THE SWAY BAR CONNECTING LINKS INTO FACTORY LOCATION. LINE UP AND INSTALL THE FACTORY CONNECTING LINK HARDWARE THEN TORQUE BOTH SIDES TO 17 FT LBS.
20. RECONNECT THE ANTILOCK BRAKE WIRE TO THE CONNECTOR BEHIND THE UPPER CONTROL ARM MOUNTING POCKET AND ALSO TO THE CLIP ON THE UPPER CONTROL ARM.
21. MAKE SURE ALL FASTENERS EFFECTED BY THIS PROCEDURE ARE TORQUED TO FACTORY SPEC.
22. REINSTALL TIRE AND WHEEL ASSEMBLY.
23. CHECK AND MAKE SURE THAT ALL INSTALLATION STEPS HAVE BEEN COMPLETED. CHECK ALL NUTS AND BOLTS FOR TORQUE AFTER THE FIRST 300 MILES AND AT EVERY ROUTINE SERVICE INSPECTION.
24. JACK THE VEHICLE UP AND REMOVE STANDS, THEN LET THE VEHICLE DOWN.
25. MAKE SURE THERE ARE NO CLEARANCE PROBLEMS. ROTATE THE STEERING LOCK TO LOCK UNDER FULL WEIGHT OF THE VEHICLE AND FULL SUSPENSION TRAVEL

REAR BLOCK INSTALLATION

26. JACK UP THE REAR OF THE VEHICLE AND PLACE JACK STANDS UNDER THE FRAME RAILS. LOWER THE VEHICLE ONTO THE JACK STANDS AND MAKE SURE THE STANDS ARE SECURELY HOLDING THE VEHICLE. SUPPORT THE REAR AXLE WITH A FLOOR JACK AND SMALL JACK STANDS.
27. REMOVE THE REAR TIRE WHEEL ASSEMBLY.
28. REMOVE THE STOCK REAR SHOCKS FROM THE LOWER MOUNT.
29. LOCATE AND REMOVE THE FOLLOWING ANTILOCK BRAKE LINE CLIPS FROM THE FACTORY SLOT HOLES. **DO NOT PULL ON THE ANTI LOCK WIRE.**
 - A. LOCATE AND REMOVE THE ANTILOCK CLIP OUT OF THE HOLE IN THE AXLE AT THE REAR OF THE LEAF SPRING PERCH(IF EQUIPPED WITH REAR ANTILOCK).
 - B. LOCATE AND REMOVE THE ANTILOCK CLIP OUT OF THE HOLE IN THE FRAME JUST BEHIND THE BUMP STOP(IF EQUIPPED WITH REAR ANTI LOCK).



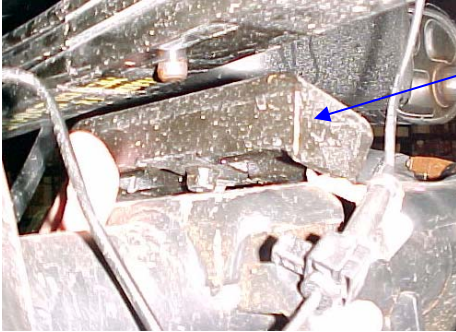
ANTI LOCK
BRAKE WIRE
CLIP LOCATION

BEHIND PERCH

BEHIND BUMP
STOP

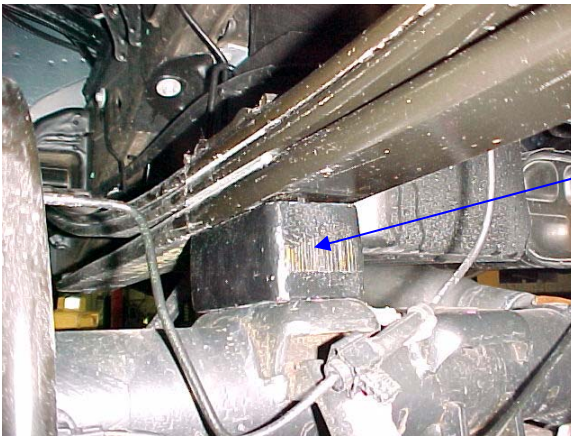


30. LOOSEN AND REMOVE THE STOCK U-BOLTS AND DISCARD.
31. REMOVE THE FACTORY LOWER SPRING PLATE.
32. LOWER THE AXLE FAR ENOUGH TO ALLOW STOCK BLOCK TO BE REMOVED.



THE FACTORY BLOCK
BEING REMOVED.

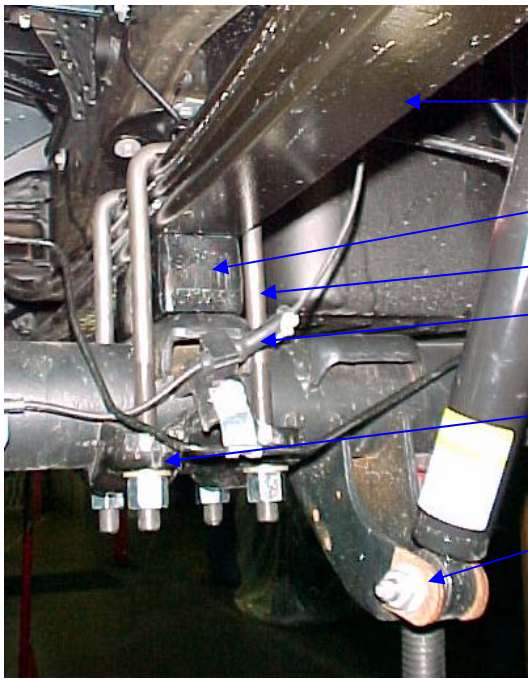
33. LOWER THE AXLE JUST FAR ENOUGH TO BE ABLE TO INSTALL THE NEW SUPPLIED BLOCK BETWEEN THE TOP OF THE AXLE PAD AND THE BOTTOM OF THE LEAF SPRING.
34. INSTALL THE SUPPLIED BLOCK MAKING SURE THE BLOCK PIN GOES INTO THE AXLE CENTER PIN HOLE AND RAISE THE AXLE SLOWLY. MAKE SURE THE CENTER PIN HEAD ON THE BOTTOM OF THE LEAF SPRING PACK GOES INTO THE TOP OF THE NEW BLOCK CENTER PIN HOLE. JACK THE AXLE UP SLIGHTLY AND SECURE.



NEW BLOCK BEING INSTALLED
WITH THE LEAF SPRING
CENTER PIN AND THE BLOCK
PIN LOCATED CORRECTLY.

35. INSTALL THE SUPPLIED U-BOLTS DOWN OVER THE LEAF SPRING, NEW BLOCK AND AXLE.
36. INSTALL THE STOCK LOWER U-BOLT PLATE UP OVER THE U-BOLTS AND INSTALL THE SUPPLIED U-BOLT WASHERS AND TALL HEX NUTS AND CROSS TIGHTEN THE U-BOLT NUTS AND THEN TORQUE THEM TO 74 FT. LBS.
37. REINSTALL THE STOCK SHOCK INTO THE LOWER MOUNT AND TORQUE THE LOWER SHOCK HARDWARE TO 85 FT LBS.
38. REINSTALL THE ANTILOCK WIRE/CLIPS INTO THE STOCK CLIP HOLES IN THE AXLE AND FRAME.

NOTE: REFER TO THE PHOTO ON THE NEXT PAGE FOR LOCATION OF COMPONENTS.



COMPONENT LOCATION

FACTORY LEAF SPRING

NEW SUPPLIED BLOCK

NEW SUPPLIED U-BOLTS

ANTILOCK WIRE

FACTORY U-BOLT SPRING PLATE

LOWER SHOCK MOUNTING POINT.

39. REPEAT TO THE OTHER SIDE OF THE VEHICLE.
40. GO BACK AND CHECK THAT ALL INSTALLATION STEPS HAVE BEEN COMPLETED.
41. **MAKE SURE TO INSTALL THE SUPPLIED WARNING DECAL FOLLOWING THE INSTRUCTIONS INCLUDED WITH THE WARNING INFORMATION SHEET.**
42. MAKE SURE TO KEEP THESE INSTRUCTIONS WITH THE VEHICLE.
43. THE VEHICLE NEEDS TO HAVE A FRONT END ALIGNMENT PERFORMED IMMEDIATELY AFTER THE INSTALLATION OF THIS KIT IS COMPLETE. THE FACTORY CAM BOLTS WILL NEED TO BE ADJUSTED TO THE FACTORY SPECIFICATIONS.
44. READJUST THE HEADLIGHTS TO THE PROPER SETTINGS.
45. ROAD TEST VEHICLE.
46. CHECK THE TORQUE OF ALL NUTS AND BOLTS AFFECTED BY THIS PROCEDURE. RECHECK ALL NUTS AND BOLTS FOR TIGHTNESS AFTER THE FIRST 300 MILES AND AT EVERY ROUTINE SERVICE INSPECTION.

WARNING: AGAIN CHECK TIRE AND WHEEL CLEARANCE BEFORE MOVING VEHICLE. ALSO CHECK CLEARANCE IF INSTALLING NEW TIRES AND/OR WHEELS.

NOTE: INSTALLATION OF WHEELS WITH BACKSPACING OTHER THAN STOCK MAY CHANGE THE VEHICLE HEIGHT AND ALSO EFFECT THE FRONT END ALIGNMENT.

WARNING:

INSTALLER/DEALER IT IS YOUR RESPONSIBILITY TO INSTALL THE SUPPLIED WARNING LABEL WHERE VISIBLE TO ALL OCCUPANTS AND FORWARD THE SUPPLIED WARNING SHEET & AND INSTALLATION INSTRUCTIONS TO THE END USER. FOR MORE INFORMATION PLEASE REFER TO PART NO 15237 WARNING SHEET THAT IS INCLUDED WITH THESE INSTRUCTIONS.

IF YOU WOULD HAVE ANY QUESTIONS CONCERNING THIS KIT PLEASE CALL 724-430-2068 AND ASK FOR CUSTOMER SERVICE.

GROUND FORCE

Limited Lifetime Warranty

North America Only

GROUND FORCE WARRANTY (LIMITED) AND REMEDY LIMITATIONS

TO: WHOLESALERS, JOBBERS, RETAILERS, INSTALLERS, VEHICLE OWNERS.

Ground Force warrants to vehicle owners that its products are from material defects in workmanship and materials as long as the installing vehicle owner owns the vehicle. Ground Force makes no other warranty. Ground Force makes no application or use recommendations for its products and is not responsible for such decisions. Excluded from the warranty are the finish, poly boots, and steering Stabilizers* (90 days from purchase, only). Ground Force gas shocks Have a limited warranty: One year from date of purchase.

Ground Force retains the exclusive right to determine whether a Defect is material and replacement appropriate.

MATERIAL TO PARTICIPATION IN THIS WARRANTY PROGRAM IS THE DISCLAIMER OF ALL OTHER WARRANTIES, EXPRESS OR IMPLIED, INCLUDING MERCHANTABILITY AND FITNESS FOR A PARTICULAR PURPOSE.

THE SOLE REMEDY FOR ANY CLAIM OF PRODUCT DEFECT EITHER IN BREACH OF WARRANTY CONTRACT, NEGLIGENCE, STRICT LIABILITY OR OTHERWISE IS LIMITED TO

REPAIR OR REPLACEMENT OF THE PRODUCT AT GROUND FORCE'S DISCRETION.

EACH SELLER, INSTALLER AND USER OF THE PRODUCT AGREES THAT THIS LIMITATION OF REMEDIES IS A CONDITION OF THE SALE OF THE GROUND FORCE PRODUCT. EACH DISTRIBUTOR AND/OR SELLER OF GROUND FORCE PRODUCTS IS REQUIRED TO FORWARD WARRANTY/REMEDY INFORMATION TO EACH PURCHASER.

SELLERS, INSTALLERS AND USERS OF THIS PRODUCT(S) UNDERSTAND AND AGREE THAT REPAIR/REPLACEMENT REMEDY DOES NOT FAIL OF ITS ESSENTIAL PURPOSE. HOWEVER, IF DETERMINED TO FAIL OF ITS ESSENTIAL PURPOSE, SELLERS, INSTALLERS AND USERS AGREE, IN THE ALTERNATIVE, TO ACCEPT A REFUND OF THE PURCHASE PRICE AS A SOLE REMEDY.

Ground Force is not liable to sellers, installers or users of its products for incidental or consequential damages occasioned by any defect, malfunction, sale or use of any product, whether in breach of warranty, contract, strict liability or otherwise.

THIS DOES NOT APPLY TO PRODUCT WHICH HAVE BEEN ABUSED, MISUSED, IMPROPERLY INSTALLED OR TO VEHICLE OWNERS SUBSEQUENT TO INSTALLING PURCHASE.

VALIDATION AND CLAIM PROCEDURE

Answer you questions about Ground Force products by calling our hot line 724-430-2068. Take advantage of our warranty/remedy program, complete and return the warranty registration card attached, along with a copy of your receipt, within thirty days (30) of purchase.

To make a warranty claim, notify Ground Force at:

Attn: Ground Force Warranty Claim Department
PO Box 149
Mt. Braddock, PA 15465

Providing your name, address, vehicle make and model, product sold and installing dealer, if any. For your convenience, we suggest you keep this warranty/remedy certificate with you owner's manual!

To register Part, tear off card below and mail to:

Ground Force Registration Dept
PO Box 149
Mt Braddock, PA 15465

GROUND FORCE WARRANTY/REMEDY REGISTRATION

- Yes!! I want to take advantage of Ground Force's warranty/remedy program. I have read the warranty/remedy certificate and certify that the enclosed receipt evidences my purchase of a Ground Force product

Name: _____ Address: _____
Products: _____

Part # _____ Dealer/ Location _____ / _____ Installer _____
Date/Purchase _____ / _____ Make/Model: _____ / _____
VIN # _____ Year of Vehicle: _____ Vehicle GVW: _____

Signature: _____

Part Number 15079A-REV.B



WARNING

MODIFYING AN ORIGINAL EQUIPPED VEHICLE WILL RESULT IN A VEHICLE HANDLING DIFFERENTLY. ALL TYPES OF SUSPENSION MODIFICATIONS WILL AFFECT REACTION, RIDE, HANDLING AND WEAR AND TEAR RATE OF A VEHICLE AND ITS COMPONENTS. ABRUPT MANEUVERS, SHARP AND SUDDEN TURNS AND WEATHER CONDITIONS WILL INCREASE THE VEHICLE'S SUSCEPTIBILITY FOR LOSS OF CONTROL. DEATH AND SERIOUS INJURY COULD BE THE RESULT IF YOU FAIL TO OPERATE A MODIFIED VEHICLE SAFELY. KNOW AND FOLLOW THE LAWS OF THE STATES.

**GROUND FORCE Mailing
Address:**
P.O. Box 149
Mt. Braddock, PA 15465

**GROUND FORCE
Shipping Address:**
714 Braddock View Drive
Mt. Braddock, PA. 15465

(724) 430-2068
(724) 430-2075 Fax

ENCLOSED WITH THIS PRODUCT IS A WARNING LABEL WHICH IS TO BE AFFIXED
ON THE VISOR OF THE VEHICLE WHERE VISIBLE TO ALL OCCUPANTS.