

GROUND FORCE

09 & UP DODGE 4X4 FRONT 2.0" & REAR 1.0" LEVELING KIT INSTALLATION INSTRUCTIONS

READ INSTRUCTIONS COMPLETELY THROUGH BEFORE STARTING.

FAILURE TO ADHERE TO THE INSTRUCTIONS WILL VOID ANY GROUND FORCE WARRANTY

IT IS RECOMMENDED THAT INSTALLATION BE DONE BY A QUALIFIED MECHANIC.

REPLACE ALL STOCK PARTS THAT ARE DAMAGED OR WORN.

INTERMIXING OF PARTS IS NOT RECOMMENDED AND WILL VOID THE WARRANTY.

ALWAYS WEAR EYE PROTECTION.

ALWAYS USE PROPERLY RATED SAFETY STANDS WHENEVER A PROCEDURE REQUIRES YOU TO BE UNDER A VEHICLE. KNOW AND FOLLOW ALL SAFE WORK PRACTICES TO AVOID SERIOUS INJURY OR DEATH.

NOTE: WE WANT TO THANK YOU FOR PURCHASING A *GROUND FORCE* PREMIUM LEVELING KIT. THIS KIT IS MANUFACTURED FROM HIGH QUALITY MADE IN THE USA MATERIALS. THE HIGH STRENGTH URETHANE THAT WE USE FOR OUR SPACERS IS HEAT RESISTANCE, IMPACT RESISTANCE AND ALSO HAS A EXCELLENT RESISTANCE TO OIL, SOLVENTS AND MANY OTHER CHEMICALS. WE ALSO USE HIGH STRENGTH 4140 MATERIAL FOR OUR STRUT EXTENDERS THAT HAS BEEN HEAT TREATED, BLACK ZINC COATED AND AFTER BAKED TO RELIEVE ANY HYDROGEN EMBRITTLEMENT. THIS KIT HAS A LIMITED LIFETIME WARRANTY.

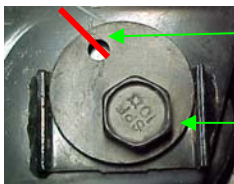
CHECK TO SEE THAT ALL PARTS LISTED ARE INCLUDED.

2- FRONT STRUT SPACERS 1-PARTS PACK
6- STRUT EXTENDERS 1-GROUND FORCE WARNING DECAL
2- REAR URETHANE UPPER COIL SPRING SPACERS
1- INSTALLATION INSTRUCTION

MEASURE AND DOCUMENT THE VEHICLE HEIGHT FROM FLOOR TO FENDER LIP.

LF _____ RF _____ LR _____ RR _____

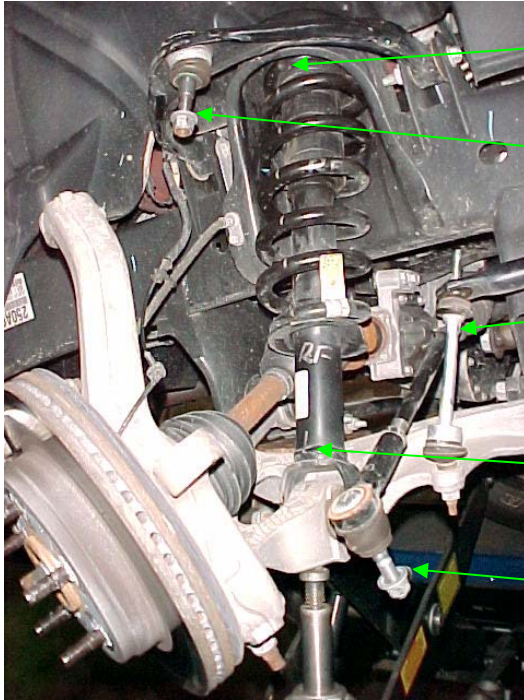
1. BEFORE GETTING UNDER VEHICLE, JACK THE FRONT OF VEHICLE UP AND PLACE STANDS UNDER THE FRAME RAILS. LOWER THE VEHICLE ONTO JACK STANDS AND MAKE SURE STANDS ARE SECURELY HOLDING THE VEHICLE.
2. REMOVE TIRE AND WHEEL ASSEMBLY.
3. THE LOWER CONTROL ARM FRAME MOUNTS HAVE FACTORY ALIGNMENT SLOTS AND MUST BE MARKED BEFORE LOOSING. THIS PROCEDURE WILL AID IN ADJUSTING THESE BOLTS BACK TO THE CORRECT LOCATION DURING FINAL ASSEMBLY.
 - A. USING A PAINT MARKER PLACE PAINT LINES ON ALL FOUR LOWER CONTROL ARM MOUNTING BOLT LOCATIONS.
 - B. LOOSEN BUT DO NOT REMOVE THE FOUR LOWER CONTROL ARM TO FRAME MOUNT BOLTS. THIS NEEDS TO BE DONE SO THAT THE LOWER CONTROL ARM WILL SWING DOWN FAR ENOUGH TO BE ABLE TO REMOVE AND REINSTALL THE STRUT ASSEMBLY FROM THE VEHICLE. SUPPORT THE LOWER CONTROL ARM.



INDEX MARK

FACTORY LOWER
CONTROL ARM
ALIGNMENT CAM BOLT
WASHER

4. REMOVE THE SWAY BAR CONNECTING LINKS FROM THE SWAY BAR.
5. REMOVE THE OUTER TIE ROD NUT AND REMOVE THE TIE ROD FROM THE SPINDLE USING A TIE ROD PULLER OR TAP ON THE SIDE OF THE SPINDLE WITH A MALLET. BE CAREFUL NOT TO DAMAGE THE RUBBER BOOT WHILE DOING THIS PROCEDURE.
6. REMOVE THE UPPER BALL JOINT NUT AND REMOVE THE BALL JOINT FROM THE SPINDLE USING A BALL JOINT SEPARATOR OR TAP ON THE SIDE OF THE SPINDLE WITH A MALLET. BE CAREFUL NOT TO DAMAGE THE RUBBER BOOT WHILE DOING THIS PROCEDURE.



UPPER STRUT TO FRAME
INDEX MARKS.

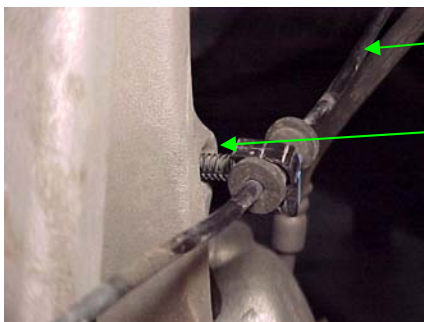
UPPER BALL JOINT

SWAY BAR CONNECTING LINK

LOWER STRUT TO LOWER
CONTROL ARM INDEX MARKS

OUTER TIE ROD

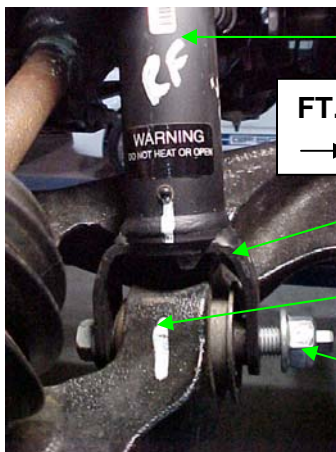
7. MARK THE UPPER AND LOWER STRUT MOUNTS SO THAT WHEN YOU REINSTALL THE STRUT YOU WILL BE ABLE TO ALIGN THE UPPER AND LOWER STRUT MOUNTS IN THE STOCK LOCATION. ALSO MARK THE STRUTS **LEFT** AND **RIGHT** AS THE FRONT COILS COULD BE **DIFFERENT** LEFT TO RIGHT.
8. LOCATE AND REMOVE THE ANTI-LOCK BRAKE SENSOR WIRE FROM THE FACTORY MOUNT ON THE INSIDE OF THE SPINDLE BELOW THE UPPER BALL JOINT MOUNTING LOCATION.



ANTI- LOCK BRAKE
SENSOR WIRE

ANTI-LOCK BRAKE SENSOR
WIRE FACTORY MOUNTING
LOCATION.

9. LOOSEN AND REMOVE THE LOWER STRUT MOUNTING BOLT (THE BOLT THAT ATTACHES THE LOWER STRUT CLEVIS TO THE LOWER CONTROL ARM). **REFER TO PHOTO ON THE NEXT PAGE.**



SHOWING PASSENGER SIDE
FRONT STRUT

LOWER CLEVIS STRUT
MOUNT TO LOWER CONTROL
ARM

LOWER STRUT MOUNT TO
LOWER CONTROL ARM
INDEX MARKS

LOWER STRUT MOUNTING
HARDWARE

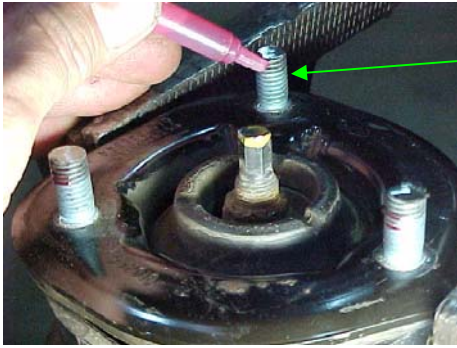
WARNING: THE COIL SPRING ASSEMBLY IS UNDER PRESSURE, DO NOT REMOVE THE **CENTER** UPPER STRUT ROD NUT.

10. REMOVE THE **OUTER THREE NUTS** ATTACHING THE UPPER STRUT ASSEMBLY TO THE VEHICLE FRAME.
11. LOWER THE JACK SLIGHTLY UNDER THE LOWER CONTROL ARM REMOVE THE STRUT ASSEMBLY FROM THE VEHICLE.
12. REPEAT STRUT REMOVAL PROCEDURE TO OTHER SIDE OF VEHICLE.
13. UPPER STRUT STUD TRIMMING PROCEDURE.
 - A. INSTALL THE SUPPLIED TWO **FREE RUNNING M10-1.50** HEX NUTS ONTO ONE OF THE FACTORY UPPER STUDS.
 - B. MEASURE AND LOCK THE NUTS DOWN .750" ABOVE THE TOP OF THE STRUT MOUNT.
 - C. CUT THE EXCESS STUD OFF USING A FINE TOOTH SAW OR CUT OFF WHEEL.
 - D. REMOVE THE TWO FREE RUNNING NUTS AND REPEAT THIS PROCEDURE TO THE REMAINING FIVE STUDS. **DISCARD** THESE **TWO FREE RUNNING NUTS** AFTER ALL SIX STUDS HAVE BEEN TRIMMED AS NEW LOCK NUTS WILL BE INSTALLED DURING STRUT TO FRAME INSTALLATION.



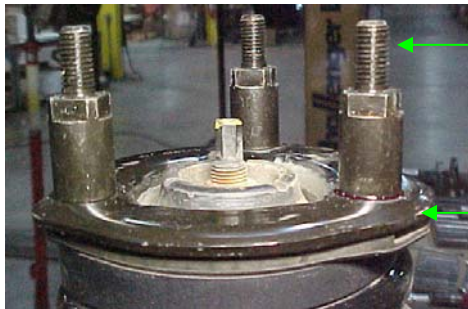
14. STRUT EXTENDER INSTALLATION PROCEDURE.

- A. APPLY A FEW DROPS OF THE SUPPLIED THREAD LOCKER TO EACH OF THE FACTORY STRUT STUDS.



HIGH STRENGTH THREAD LOCKER BEING APPLIED TO LOCK THE NEW STRUT EXTENDERS INTO PLACE.

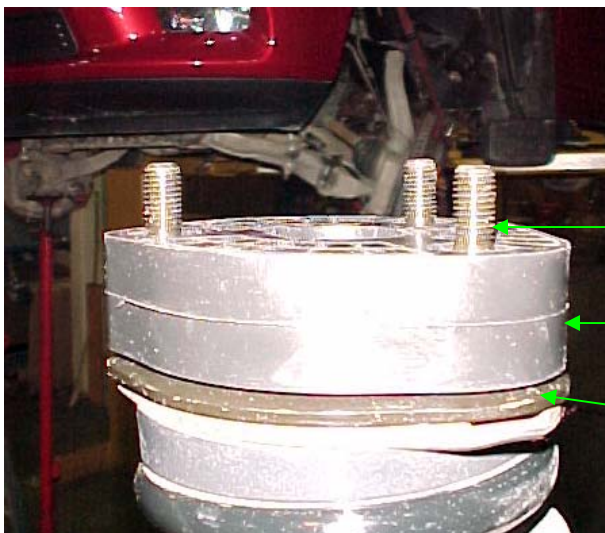
- B. INSTALL THE THREE SUPPLIED STRUT EXTENDERS PER STRUT AND TIGHTEN USING A 5/8" WRENCH.



STRUT EXTENDERS BEING INSTALLED OVER THE TRIMMED STRUT UPPER MOUNTING STUDS.

FACTORY UPPER STRUT MOUNT.

15. INSTALL THE SUPPLIED URETHANE STRUT SPACER OVER THE STRUT EXTENDERS ON TOP OF THE FACTORY STRUT MOUNT.

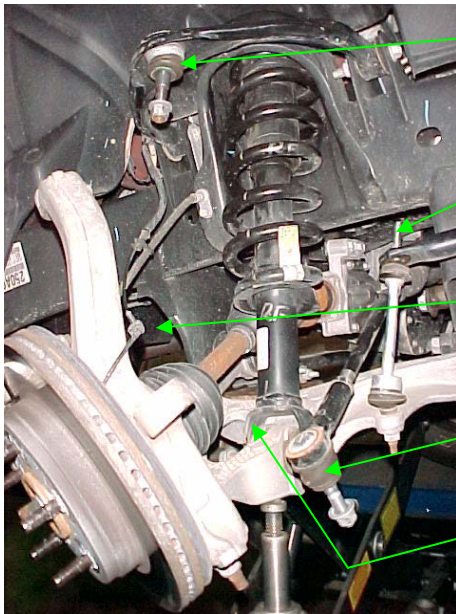


STEEL STRUT EXTENDERS

URETHANE STRUT SPACER

FACTORY UPPER STRUT MOUNT

16. STRUT TO VEHICLE INSTALLATION.



UPPER BALL JOINT

**UPPER CONNECTING LINK
END**

**ANTI- LOCK BRAKE WIRE
AND FACTORY MOUNTING
LOCATION.**

OUTER TIE ROD

**LOWER STRUT MOUNTING
POINT**

- A. INSTALL THE STRUT ASSEMBLY UP INTO THE FACTORY LOCATION.
 - B. ALIGN AND INSTALL THE THREE STUDS ON THE UPPER STRUT MOUNT INTO THE FACTORY FRAME UPPER STRUT MOUNTING LOCATION.
 - C. INSTALL THE THREE SUPPLIED UPPER M10 STRUT RETAINING WASHERS AND THE SUPPLIED **M10-1.50 LOCKNUTS**, JUST SNUG NUTS AT THIS TIME.
 - D. ALIGN AND INSTALL THE LOWER STRUT CLEVIS MOUNT TO THE LOWER CONTROL ARM AND INSTALL THE FACTORY HARDWARE (**NUT** TO THE **FRONT** OF VEHICLE) THROUGH THE STOCK LOWER STRUT MOUNT AND THROUGH THE LOWER CONTROL ARM, JUST SNUG NUT.
 - E. REPEAT STRUT INSTALLATION PROCEDURE TO THE OTHER SIDE OF VEHICLE.
17. JACK THE LOWER CONTROL ARM UP SLIGHTLY AND SECURE. USING A LARGE BAR, PRY DOWN ON THE UPPER CONTROL ARM AND REINSTALL THE UPPER BALL JOINT INTO THE SPINDLE.
- A. INSTALL THE FACTORY **UPPER BALL JOINT** NUTS AND **TORQUE TO 85 FT. LBS.**
- 18 REINSTALL THE OUTER TIE RODS TO THE SPINDLES. INSTALL THE FACTORY **TIE ROD** NUTS AND TORQUE TO **65 FT. LBS.**
19. JACK THE LOWER CONTROL ARMS UP TO RIDE HEIGHT AND PLACE JACK STANDS UNDER THE LOWER CONTROL ARMS. REINSTALL THE CONNECTING LINKS TO THE SWAY BAR. TORQUE THE **CONNECTING LINK** FACTORY HARDWARE TO **27 FT. LBS.**
20. REINSTALL THE ANTI-LOCK BRAKE SENSOR WIRES TO THE FACTORY MOUNTING POINT.
21. STRUT TORQUE PROCEDURE
- A. TORQUE THE **UPPER** THREE STRUT NUTS TO **35 FT. LBS.**
 - B. TORQUE THE **LOWER** STRUT BOLT/NUT TO **105 FT. LBS.**
22. ADJUST THE FOUR LOWER CONTROL ARM ALIGNMENT CAM BOLTS TO THE INDEX MARKS MADE IN STEP NO 3 AND TORQUE ALL FOUR OF THESE ALIGNMENT CAM BOLT NUTS TO SPEC.
23. REINSTALL TIRE AND WHEEL ASSEMBLY AND TORQUE TO SPEC.

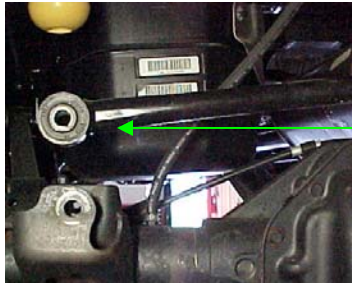
REAR SPACER INSTALLATION INSTRUCTIONS

- 24. REAR COIL SPACER INSTALLATION. JACK UP THE REAR OF THE VEHICLE AND PLACE JACK STANDS UNDER THE FRAME RAILS. LOWER THE VEHICLE ONTO THE JACK STANDS AND MAKE SURE THE STANDS ARE SECURELY HOLDING THE VEHICLE. SUPPORT THE REAR AXLE WITH A FLOOR JACK. REMOVE THE REAR TIRE AND WHEEL ASSEMBLY.
- 25. WITH THE REAR AXLE SUPPORTED, REMOVE THE STOCK REAR SHOCK **LOWER** MOUNTING HARDWARE FROM BOTH SIDES OF VEHICLE(SAVE HARDWARE) AND REMOVE LOWER SHOCK FROM THE LOWER MOUNT.



LOWER SHOCK REMOVED FORM LOWER AXLE SHOCK MOUNT

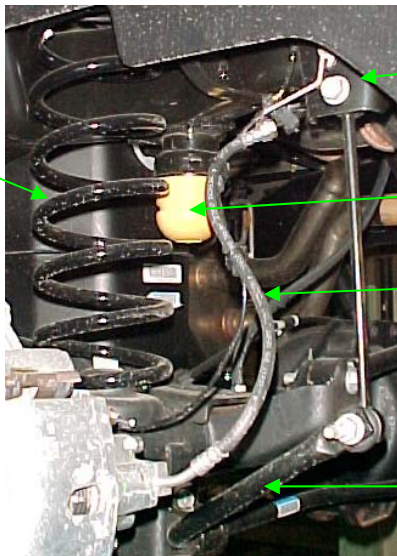
- 26. REMOVE THE LOWER TRACK BAR HARDWARE FROM THE AXLE AND SAVE.



LOWER TRACK BAR REMOVED FROM THE LOWER TRACK ARM AXLE MOUNT.

- 27. LOCATE THE REAR ANTI-LOCK BRAKE SENSOR WIRE, BRAKE LINES AND VENT HOSE. CHECK TO MAKE SURE THAT THEY HAVE ENOUGH SLACK TO REMOVE AND REPLACE THE COIL SPRINGS. **DO NOT OVER EXTEND ANY OF THESE WIRES OR LINES WHILE DOING THIS PROCEDURE. REFER TO PHOTO FOR COMPONENT LOCATION.**

REAR COIL SPRING



UPPER SWAY BAR CONNECTING LINK TO FRAME MOUNT

BUMP STOP

ANTI LOCK WIRE AND BRAKE LINE LOCATION

SWAY BAR

WARNING: THE COILS ARE UNDER PRESSURE. EXTREME CARE MUST BE TAKEN WHEN REMOVING AND INSTALLING THE COILS TO AVOID INJURY.

28. REAR COIL REMOVAL. MAKE SURE THE JACK STANDS ARE SECURE UNDER THE VEHICLE FRAME AND THE REAR AXLE IS SUPPORTED.

- A. REMOVE THE UPPER SWAY BAR CONNECTING LINK HARDWARE FROM THE FRAME SAVE HARDWARE.



**UPPER SWAY BAR
CONNECTING LINK
REMOVED FROM
THE FRAME
MOUNT**

- B. PLACE INDEX MARKS FROM THE FACTORY COIL SPRING TO THE LOWER SPRING SEAT AND ALSO MARK THE COILS LEFT AND RIGHT AS SOME OF THESE VEHICLES WILL HAVE DRIVER AND PASSENGER SIDE COIL SPRING.



**"R" FOR RIGHT OR
PASSENGER SIDE.**

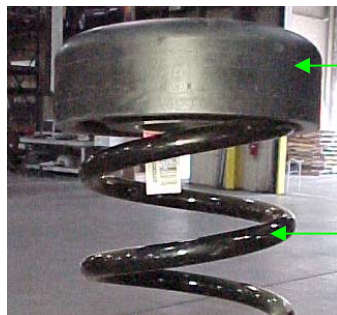
**LOWER COIL TO LOWER
SPRING SEAT INDEX
MARK**

- C. LOWER THE JACK UNDER THE REAR DIFFERENTIAL, REMOVE THE STOCK REAR COILS FROM THE VEHICLE.
- D. DISCARD THE FACTORY UPPER RUBBER COIL SPRING INSULATORS AS THEY WILL BE REPLACED WITH A NEW THICKER URETHANE UPPER SPRING SPACER.



**UPPER FACTORY
RUBBER
INSULATOR
BEING DISCARDED**

29. INSTALL THE NEW UPPER URETHANE SPRING SPACER ONTO THE TOP OF THE FACTORY REAR COIL SPRING AS SHOWN IN THE PHOTO BELOW.



**NEW UPPER
URETHANE SPRING
SPACER INSTALLED
ON TOP OF FACTORY
COIL SPRING**

FACTORY COIL

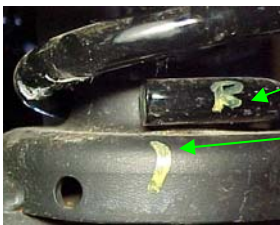
30. COIL SPRING INSTALLATION.

- A. WITH THE NEW UPPER URETHANE SPRING SEAT INSTALLED ON THE TOP OF THE FACTORY COIL SPRING, INSTALL THIS ASSEMBLY UP INTO THE STOCK FRAME UPPER COIL SPRING MOUNT.



NEW UPPER URETHANE SPRING SEAT SPACER BEING INSTALLED UP INTO THE FACTORY COIL SPRING FRAME MOUNT.

- B. INSTALL THE LOWER COIL OVER THE FACTORY COIL SPRING SEAT ON THE AXLE AS SHOWN BELOW.
- C. REPEAT THIS PROCEDURE TO THE OTHER SIDE OF VEHICLE.
- D. CAREFULLY JACK UP THE REAR DIFFERENTIAL WHILE ALIGNING THE UPPER AND LOWER AND SPRINGS INTO THE SPRING SEATS. **SPIN THE COILS UNTIL THEY ARE CENTERED AND THERE IS PROPER CLEARANCE BETWEEN THE FRAME AND OUTER COIL. MAKE SURE THE TOP OF THE NEW COIL AND URETHANE SPRING SEAT IS CENTERED OVER THE STOCK UPPER STEEL SPRING SEAT INNER TABS.**
- E. LOCATE THE LOWER COIL SPRING SEAT INDEX MARKS MADE IN STEP 28B. WHILE SEATING THE COILS THE LOWER END OF THE COIL SHOULD BE CLOSE TO THE INDEX MARK.



“R” FOR RIGHT OR PASSENGER SIDE.

LOWER COIL TO LOWER SPRING SEAT INDEX MARK

- F. ONCE THE SPRINGS ARE PROPERLY SEATED AND ALL CLEARANCES ARE OK JACK UP THE REAR AXLE TO RIDE HEIGHT AND PLACE JACK STANDS UNDER THE AXLE. MAKE SURE THE VEHICLE IS SECURE.
31. REINSTALL THE SHOCKS INTO THE LOWER MOUNT USING THE FACTORY HARDWARE.
- A. TORQUE THE LOWER SHOCK MOUNTING HARDWARE TO SPEC.
32. CHECK THE REAR ANTI LOCK BRAKE WIRES, BRAKE LINES AND VENT HOSE FOR PROPER CLEARANCE AND ADJUST IF NECESSARY.

33. REINSTALL THE REAR SWAY BAR CONNECTING LINK INTO THE SWAY BAR FRAME MOUNT USING THE FACTORY HARDWARE AND TORQUE TO SPEC.
34. REINSTALL THE TRACK BAR TO THE AXLE USING THE FACTORY HARDWARE AND TORQUE TO SPEC.
35. REINSTALL THE REAR TIRE AND WHEEL ASSEMBLY. TORQUE THE LUG NUTS TO SPEC. CHECK THE CLEARANCE BETWEEN THE REAR AXLE AND ALL REAR COMPONENTS. ADJUST IF NECESSARY.
36. JACK UP THE REAR OF VEHICLE REMOVE SAFETY STANDS AND LOWER VEHICLE.
37. MAKE SURE THERE ARE NO CLEARANCE PROBLEMS. ROTATE THE STEERING LOCK TO LOCK UNDER FULL WEIGHT OF THE VEHICLE AND FULL SUSPENSION TRAVEL.
38. GO BACK AND CHECK THAT ALL INSTALLATION STEPS HAVE BEEN COMPLETED. CHECK THE TORQUE OF ALL NUTS AND BOLTS AFFECTED BY THIS PROCEDURE. RECHECK ALL NUTS AND BOLTS FOR TIGHTNESS AFTER THE FIRST 300 MILES AND AT EVERY ROUTINE SERVICE INSPECTION.
39. MAKE SURE TO INSTALL THE SUPPLIED WARNING DECAL FOLLOWING THE INSTRUCTIONS INCLUDED WITH THE WARNING INFORMATION SHEET.
40. MAKE SURE TO KEEP THESE INSTRUCTIONS WITH THE VEHICLE.
41. READJUST THE HEADLIGHTS TO THE PROPER SETTINGS.
42. ROAD TEST VEHICLE.
43. THE VEHICLE NEEDS TO HAVE A FRONT END ALIGNMENT PERFORMED IMMEDIATELY AFTER THE INSTALLATION OF THIS KIT IS COMPLETE. THE FACTORY ALIGNMENT ADJUSTING BOLTS WILL NEED TO BE SET TO THE FACTORY SPECIFICATIONS.

WARNING: AGAIN CHECK TIRE AND WHEEL CLEARANCE BEFORE MOVING VEHICLE. ALSO CHECK CLEARANCE IF INSTALLING NEW TIRES AND/OR WHEELS.

NOTE: INSTALLATION OF WHEELS WITH BACKSPACING OTHER THAN STOCK MAY CHANGE THE VEHICLE HEIGHT AND ALSO EFFECT THE FRONT END ALIGNMENT.

WARNING: INSTALLER/DEALER IT IS YOUR RESPONSIBILITY TO INSTALL THE SUPPLIED WARNING LABEL WHERE VISIBLE TO ALL OCCUPANTS AND FORWARD THE SUPPLIED WARNING SHEET & AND INSTALLATION INSTRUCTIONS TO THE END USER. FOR MORE INFORMATION PLEASE REFER TO PART NO 15237 WARNING SHEET THAT IS INCLUDED WITH THESE INSTRUCTIONS.

IF YOU WOULD HAVE ANY QUESTIONS CONCERNING THIS KIT PLEASE CALL 724-430-2068 AND ASK FOR CUSTOMER SERVICE.

GROUND FORCE

Limited Lifetime Warranty

North America Only

GROUND FORCE WARRANTY (LIMITED) AND REMEDY LIMITATIONS

TO: WHOLESALERS, JOBBERS, RETAILERS, INSTALLERS, VEHICLE OWNERS.

Ground Force warrants to vehicle owners that its products are from material defects in workmanship and materials as long as the installing vehicle owner owns the vehicle. Ground Force makes no other warranty. Ground Force makes no application or use recommendations for its products and is not responsible for such decisions. Excluded from the warranty are the finish, poly boots, and steering Stabilizers* (90 days from purchase, only). Ground Force gas shocks Have a limited warranty: One year from date of purchase.

Ground Force retains the exclusive right to determine whether a Defect is material and replacement appropriate.

MATERIAL TO PARTICIPATION IN THIS WARRANTY PROGRAM IS THE DISCLAIMER OF ALL OTHER WARRANTIES, EXPRESS OR IMPLIED, INCLUDING MERCHANTABILITY AND FITNESS FOR A PARTICULAR PURPOSE.

THE SOLE REMEDY FOR ANY CLAIM OF PRODUCT DEFECT EITHER IN BREACH OF WARRANTY CONTRACT, NEGLIGENCE, STRICT LIABILITY OR OTHERWISE IS LIMITED TO

REPAIR OR REPLACEMENT OF THE PRODUCT AT GROUND FORCE'S DISCRETION.

EACH SELLER, INSTALLER AND USER OF THE PRODUCT AGREES THAT THIS LIMITATION OF REMEDIES IS A CONDITION OF THE SALE OF THE GROUND FORCE PRODUCT. EACH DISTRIBUTOR AND/OR SELLER OF GROUND FORCE PRODUCTS IS REQUIRED TO FORWARD WARRANTY/REMEDY INFORMATION TO EACH PURCHASER.

SELLERS, INSTALLERS AND USERS OF THIS PRODUCT(S) UNDERSTAND AND AGREE THAT REPAIR/REPLACEMENT REMEDY DOES NOT FAIL OF ITS ESSENTIAL PURPOSE. HOWEVER, IF DETERMINED TO FAIL OF ITS ESSENTIAL PURPOSE, SELLERS, INSTALLERS AND USERS AGREE, IN THE ALTERNATIVE, TO ACCEPT A REFUND OF THE PURCHASE PRICE AS A SOLE REMEDY.

Ground Force is not liable to sellers, installers or users of its products for incidental or consequential damages occasioned by any defect, malfunction, sale or use of any product, whether in breach of warranty, contract, strict liability or otherwise.

THIS DOES NOT APPLY TO PRODUCT WHICH HAVE BEEN ABUSED, MISUSED, IMPROPERLY INSTALLED OR TO VEHICLE OWNERS SUBSEQUENT TO INSTALLING PURCHASE.

VALIDATION AND CLAIM PROCEDURE

Answer you questions about Ground Force products by calling our hot line 724-430-2068. Take advantage of our warranty/remedy program, complete and return the warranty registration card attached, along with a copy of your receipt, within thirty days (30) of purchase.

To make a warranty claim, notify Ground Force at:

Attn: Ground Force Warranty Claim Department
PO Box 149
Mt. Braddock, PA 15465

Providing your name, address, vehicle make and model, product sold and installing dealer, if any. For your convenience, we suggest you keep this warranty/remedy certificate with you owner's manual!

To register Part, tear off card below and mail to:

Ground Force Registration Dept
PO Box 149
Mt Braddock, PA 15465

GROUND FORCE WARRANTY/REMEDY REGISTRATION

- Yes!! I want to take advantage of Ground Force's warranty/remedy program. I have read the warranty/remedy certificate and certify that the enclosed receipt evidences my purchase of a Ground Force product

Name: _____ Address: _____
Products: _____

Part # _____ Dealer/ Location _____ / _____ Installer _____
Date/Purchase _____ / _____ Make/Model: _____ / _____
VIN # _____ Year of Vehicle: _____ Vehicle GVW: _____

Signature: _____

Part Number 15079A-REV.B



WARNING

MODIFYING AN ORIGINAL EQUIPPED VEHICLE WILL RESULT IN A VEHICLE HANDLING DIFFERENTLY. ALL TYPES OF SUSPENSION MODIFICATIONS WILL AFFECT REACTION, RIDE, HANDLING AND WEAR AND TEAR RATE OF A VEHICLE AND ITS COMPONENTS. ABRUPT MANEUVERS, SHARP AND SUDDEN TURNS AND WEATHER CONDITIONS WILL INCREASE THE VEHICLE'S SUSCEPTIBILITY FOR LOSS OF CONTROL. DEATH AND SERIOUS INJURY COULD BE THE RESULT IF YOU FAIL TO OPERATE A MODIFIED VEHICLE SAFELY. KNOW AND FOLLOW THE LAWS OF THE STATES.

**GROUND FORCE Mailing
Address:**
P.O. Box 149
Mt. Braddock, PA 15465

**GROUND FORCE
Shipping Address:**
714 Braddock View Drive
Mt. Braddock, PA. 15465

(724) 430-2068
(724) 430-2075 Fax

ENCLOSED WITH THIS PRODUCT IS A WARNING LABEL WHICH IS TO BE AFFIXED
ON THE VISOR OF THE VEHICLE WHERE VISIBLE TO ALL OCCUPANTS.