

GROUND FORCE

94-02 DODGE RAM 1500 4X4 94-11 DODGE RAM 2500/3500 4X4 FRONT 2.0" LEVELING KIT INSTALLATION

READ INSTRUCTIONS/WARNINGS COMPLETELY THROUGH BEFORE STARTING.
FAILURE TO ADHERE TO THE INSTRUCTIONS WILL VOID ANY GROUND FORCE WARRANTY
IT IS RECOMMENDED THAT INSTALLATION BE DONE BY A QUALIFIED MECHANIC.

REPLACE ALL STOCK PARTS THAT ARE DAMAGED OR WORN.

INTERMIXING OF PARTS IS NOT RECOMMENDED AND WILL VOID THE WARRANTY.

ALWAYS WEAR EYE PROTECTION.

ALWAYS USE PROPERLY RATED SAFETY STANDS WHENEVER A PROCEDURE REQUIRES
YOU TO BE UNDER A VEHICLE. KNOW AND FOLLOW ALL SAFE WORK PRACTICES TO
AVOID SERIOUS INJURY OR DEATH.

NOTE: WE WANT TO THANK YOU FOR PURCHASING A *GROUND FORCE* PREMIUM LEVELING KIT.
THIS KIT IS MANUFACTURED FROM HIGH QUALITY MADE IN THE USA MATERIALS. THE HIGH
STRENGTH URETHANE THAT WE USE FOR OUR SPACERS IS HEAT RESISTANCE, IMPACT
RESISTANCE AND ALSO HAS A EXCELLENT RESISTANCE TO OIL, SOLVENTS AND MANY OTHER
CHEMICALS. WE USE HIGH STRENGTH DOM TUBE FOR OUR STEEL SUPPORT SLEEVES AND WE
ALSO USE HIGH STRENGTH GRADE 10.9 HARDWARE FOR THIS INSTALLATION.

THIS KIT HAS A LIMITED LIFETIME WARRANTY.

CHECK TO SEE THAT ALL PARTS LISTED ARE INCLUDED.

- 2- STEEL LEVELING SPACERS WITH URETHANE SPRING SEATS MOLDED TO THEM
- 2- URETHANE TOP SPACERS
- 1- INSTRUCTION SHEET
- 6- STEEL SUPPORT SLEEVES
- 1- PARTS PACK
- 1- GROUND FORCE WARNING DECAL

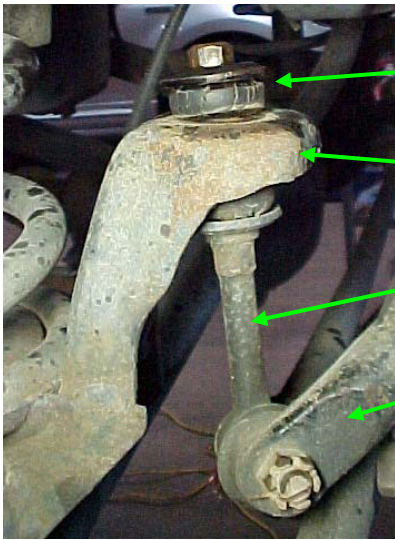
INSTALLATION PROCEDURE.

MEASURE AND DOCUMENT THE VEHICLE HEIGHT FROM FLOOR TO FENDER LIP.

LF _____ RF _____ LR _____ RR _____

1. BEFORE GETTING UNDER VEHICLE, JACK THE FRONT OF VEHICLE UP AND PLACE STANDS UNDER THE FRAME RAILS. LOWER THE VEHICLE ONTO JACK STANDS AND MAKE SURE STANDS ARE SECURELY HOLDING THE VEHICLE.
2. REMOVE TIRE AND WHEEL ASSEMBLY.

3. LOOSEN AND REMOVE THE UPPER SWAY BAR CONNECTING LINK FROM THE UPPER MOUNTING POINT ON BOTH SIDES OF THE VEHICLE SAVE HARDWARE FOR REASSEMBLY.



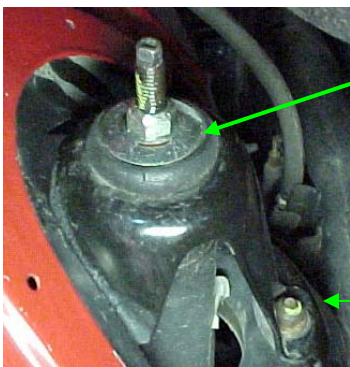
- UPPER SWAY BAR CONNECTING LINK MOUNTING HARDWARE
- UPPER CONNECTING LINK MOUNT
- SWAY BAR CONNECTING LINK
- SWAY BAR

4. PLACE INDEX MARKS FROM THE COIL TO THE FRAME AND IDENTIFY THE COILS LEFT SIDE AND RIGHT SIDE SO THAT AFTER THE SPACER INSTALLATION IS COMPLETE THE COILS CAN BE INSTALLED IN THE CORRECT LOCATION. **NOTE: THIS IS VERY IMPORTANT AS SOME DODGE TRUCKS WILL HAVE A LEFT SIDE AND RIGHT SIDE COIL SPRING.**

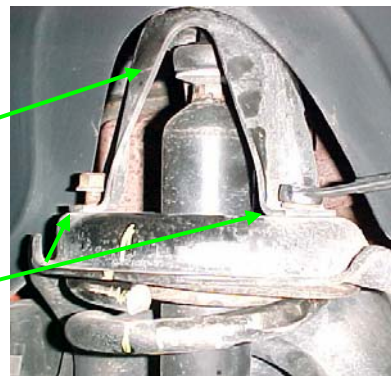


- COIL TO FRAME INDEX MARKS
- COIL IDENTIFICATION

5. JACK THE FRONT AXLE UP SLIGHTLY WITH TWO FLOOR JACKS AND SUPPORT.
6. REMOVE THE UPPER SHOCK HARDWARE AND SAVE.
7. REMOVE THE THREE NUTS HOLDING THE UPPER SHOCK TOWER TO THE FRAME. REMOVE THE UPPER SHOCK TOWER FROM THE VEHICLE AND SAVE.



- UPPER SHOCK HARDWARE
- SHOCK TOWER
- UPPER SHOCK TOWER TO FRAME HARDWARE.

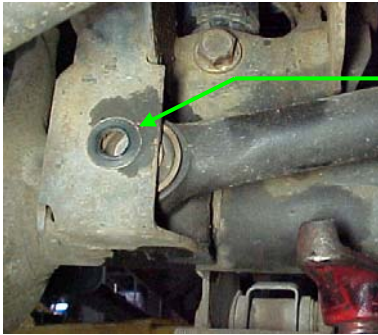


8. REMOVE AND SAVE THE STOCK LOWER SHOCK HARDWARE.
REMOVE AND SAVE THE STOCK SHOCK FROM THE VEHICLE.
REPEAT SHOCK TOWER AND SHOCK REMOVAL TO THE OTHER SIDE OF THE VEHICLE.



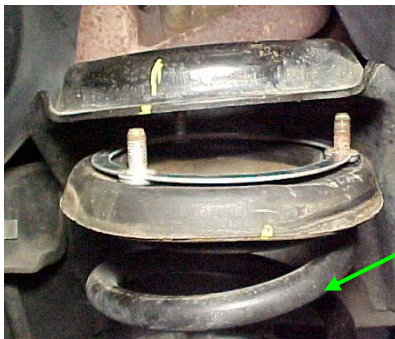
LOWER SHOCK HARDWARE.

9. WITH THE AXLE SUPPORTED REMOVE THE LOWER TRACK BAR HARDWARE(SAVE HARDWARE).
NOTE: THIS WILL ALLOW THE AXLE TO BE LOWERED FAR ENOUGH TO REMOVE AND INSTALL THE COIL SPRINGS.



TRACK BAR LOWER AXLE MOUNT
HARDWARE REMOVED

10. CHECK THE FRONT BRAKE LINES, CABLES AND WIRES FOR SUFFICIENT LENGTH AND LOWER THE FRONT AXLE JUST FAR ENOUGH TO BE ABLE TO REMOVE THE FRONT COILS SPRINGS.
 - A. REMOVE THE COIL SPRINGS FROM THE VEHICLE.
 - B. REMOVE AND DISCARD THE FACTORY UPPER RUBBER COIL SPRING ISOLATORS.
 - C. REMOVE AND DISCARD THE FACTORY METAL UPPER SPRING SEAT RING THAT HAS THE THREE STUDS.
 - D. REPEAT COIL SPRING REMOVAL TO THE OTHER SIDE OF VEHICLE.



COIL SPRING
BEING
REMOVED
FROM UPPER
FRAME MOUNT

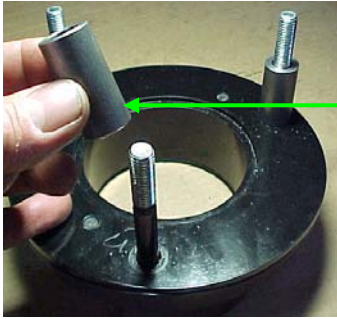


DISCARD FACTORY STEEL RING

DISCARD FACTORY RUBBER
ISOLATOR

11. NEW LEVELING SPACER ASSEMBLY.

- A. INSTALL THE SUPPLIED STEEL SUPPORT SLEEVES OVER THE STUDS ON THE NEW SPRING SEAT.



THREE STEEL SUPPORT SLEEVES BEING INSTALLED OVER THE NEW SPRING SEAT STUDS



- B. INSTALL THE NEW SUPPLIED URETHANE TOP SPACER OVER THE STUDS AND SUPPORT SLEEVES.



URETHANE SPACER BEING INSTALLED TO THE TOP OF THE NEW SPRING SEAT OVER THE STUDS AND SUPPORT SLEEVES

- C. REPEAT ASSEMBLY TO THE OTHER LEVELING SPACER.

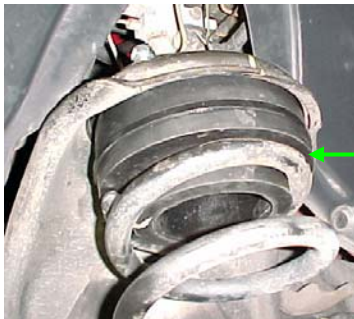
12. NEW LEVELING SPACER ASSEMBLY TO VEHICLE.

- A. LOOSELY BOLT THE SPACER ASSEMBLY TO THE UPPER COIL MOUNT AS SHOWN USING THE SUPPLIED M-10 LOCK NUTS. **NOTE:** ONLY FINGER TIGHTEN THESE NUTS AS THEY WILL NEED TO BE REMOVED TO INSTALL THE UPPER SHOCK TOWER LATER IN THE INSTALLATION.



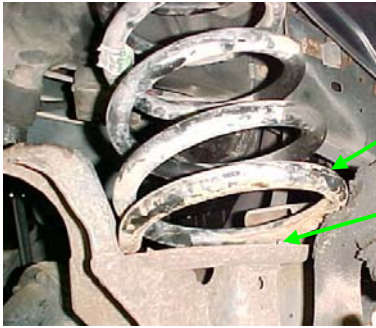
NEW UPPER LEVELING SPACER ASSEMBLY LOOSELY INSTALLED TO THE FACTORY UPPER COIL SPRING FRAME MOUNT

- B. INSTALL THE TOP OF THE STOCK COIL UP OVER THE NEW LEVELING SPACER SPRING SEAT.



FACTORY COIL SPRING BEING INSTALLED UP OVER THE NEW LEVELING SPACER SPRING SEAT

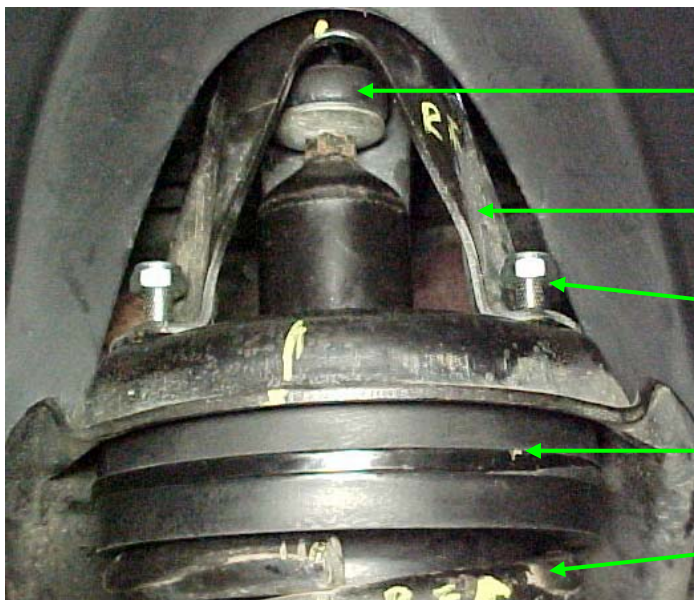
13. INSTALL THE COIL SPRING BACK INTO THE FACTORY LOWER COIL SPRING SEAT.
NOTE: YOU MAY HAVE TO PULL DOWN SLIGHTLY ON THE AXLE AND USE A PRY BAR TO GET THE COIL SEATED CORRECTLY.



COIL BEING INSTALLED INTO THE
FACTORY LOWER SPRING SEAT

LOWER COIL SPRING SEAT

- A. LINE UP THE INDEX MARKS THAT WAS MADE IN STEP 4 AND DOUBLE CHECK TO **MAKE SURE THAT YOU HAVE THE COIL SPRINGS INSTALLED ON THE CORRECT SIDE OF THE VEHICLE.**
- B. REPEAT THIS PROCEDURE TO THE OTHER SIDE OF VEHICLE.
- C. JACK THE AXLE UP SLIGHTLY TO GET THE COILS SEATED AND SUPPORT THE AXLE.
14. REMOVE THE UPPER SHOCK TOWER NUTS.
15. INSTALL THE FACTORY SHOCK DOWN INTO THE LOWER SHOCK MOUNT. INSTALL THE FACTORY LOWER SHOCK HARDWARE (DO NOT TIGHTEN YET). MAKE SURE THAT THE FACTORY STEM MOUNT STEEL WASHER AND RUBBER ISOLATOR IS INSTALLED ON TOP OF THE SHOCK.
16. INSTALL THE FACTORY UPPER SHOCK TOWER DOWN OVER THE THREE NEW SPACER STUDS.
- A. INSTALL THE SUPPLIED THREE M-10 FLAT WASHERS TO THE NEW SPACER STUDS.
- B. INSTALL THE SUPPLIED THREE M-10 LOCK NUTS TO THE NEW SPACER STUDS.
- C. TORQUE THE M-10 UPPER SHOCK TOWER HARDWARE TO 35 FT LBS.
DO NOT USE AIR TOOLS TO TIGHTEN THIS HARDWARE.
- D. INSTALL THE FACTORY UPPER SHOCK ISOLATOR/WASHER/NUT AND TORQUE TO SPEC.
- E. TORQUE THE LOWER SHOCK HARDWARE TO SPEC.
- F. REPEAT THIS PROCEDURE TO OTHER SIDE OF VEHICLE.



UPPER SHOCK STEM
MOUNT RETAINING
WASHER AND ISOLATOR

SHOCK TOWER

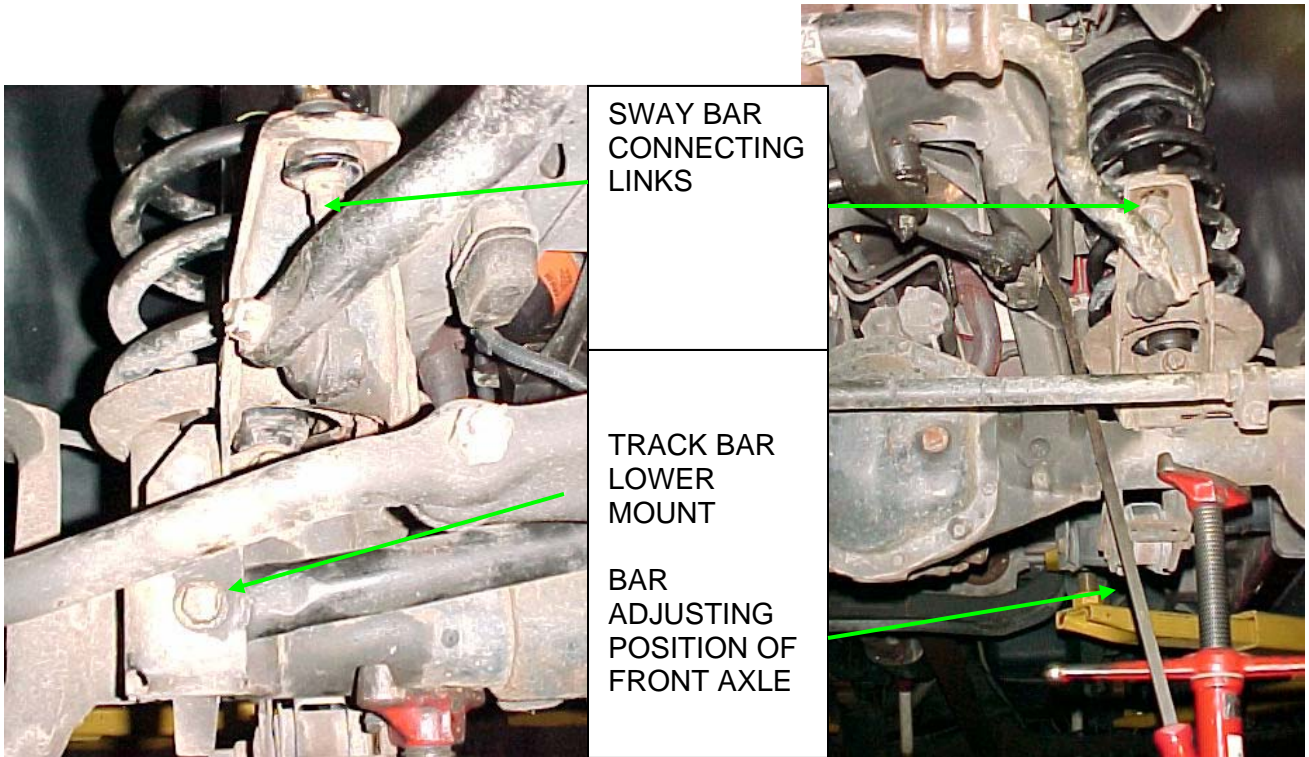
NEW M-10 LEVELING
SPACER MOUNTING
HARDWARE

NEW LEVELING SPACER
ASSEMBLY

FACTORY COIL SPRING

17. RE-INSTALL THE TRACK BAR BACK INTO THE FACTORY LOCATION AND INSTALL THE FACTORY HARDWARE. NOTE: IT MAY BE NECESSARY TO GET ASSISTANCE TO LINE UP AND INSTALL THE TRACK BAR HARDWARE.

 - A. **WITH THE FRONT AXLE ON JACK STANDS AND THE VEHICLE SECURE**, POSITION A BAR ON THE DRIVERS SIDE OF THE VEHICLE SO THAT THE FRONT AXLE AND TRACK BAR CAN BE ADJUSTED SIDE TO SIDE TO LINE UP THE TRACK BAR LOWER MOUNTING HOLE TO THE VEHICLE.
 - B. WHILE YOUR ASSISTANT HOLDS THE FRONT AXLE AND TRACK BAR INTO THE CORRECT POSITION, INSTALL THE FACTORY LOWER TRACK BAR HARDWARE JUST SNUG AT THIS TIME.



18. SWAY BAR CONNECTING LINKS
 - A. LINE UP THE SWAY BAR CONNECTING LINKS INTO THE UPPER SWAY BAR MOUNTING POINT.
 - B. JACK THE AXLE UP TO RIDE HEIGHT AND SUPPORT WITH STANDS.
 - C. INSTALL THE FACTORY SWAY BAR CONNECTING LINK HARDWARE AND TORQUE TO SPEC.
19. TORQUE THE LOWER TRACK ARM BOLT TO SPEC.
20. MAKE SURE ALL FASTENERS AFFECTED BY THIS PROCEDURE ARE TORQUED TO FACTORY SPEC.
21. REINSTALL TIRE AND WHEEL ASSEMBLY.
22. CHECK AND MAKE SURE THAT ALL INSTALLATION STEPS HAVE BEEN COMPLETED. CHECK ALL NUTS AND BOLTS FOR TORQUE AFTER THE FIRST 300 MILES AND AT EVERY ROUTINE SERVICE INSPECTION.
23. JACK THE VEHICLE UP AND REMOVE STANDS, THEN LET THE VEHICLE DOWN.
24. MAKE SURE THERE ARE NO CLEARANCE PROBLEMS. ROTATE THE STEERING LOCK TO LOCK UNDER FULL WEIGHT OF THE VEHICLE AND FULL SUSPENSION TRAVEL

25. GO BACK AND CHECK THAT ALL INSTALLATION STEPS HAVE BEEN COMPLETED.
26. ROAD TEST VEHICLE.
27. **MAKE SURE TO INSTALL THE SUPPLIED WARNING DECAL FOLLOWING THE INSTRUCTIONS INCLUDED WITH THE WARNING INFORMATION SHEET.**
28. MAKE SURE TO KEEP THESE INSTRUCTIONS WITH THE VEHICLE.
29. THE VEHICLE NEEDS TO HAVE A FRONT END ALIGNMENT PERFORMED IMMEDIATELY AFTER THE INSTALLATION OF THIS KIT IS COMPLETE. THE FACTORY CAM BOLTS WILL NEED TO BE ADJUSTED TO THE FACTORY SPECIFICATIONS.
30. READJUST THE HEADLIGHTS TO THE PROPER SETTINGS.

WARNING: AGAIN CHECK TIRE AND WHEEL CLEARANCE BEFORE MOVING VEHICLE. ALSO CHECK CLEARANCE IF INSTALLING NEW TIRES AND/OR WHEELS.

NOTE: INSTALLATION OF WHEELS WITH BACKSPACING OTHER THAN STOCK MAY CHANGE THE VEHICLE HEIGHT AND ALSO EFFECT THE FRONT END ALIGNMENT.

WARNING: INSTALLER/DEALER IT IS YOUR RESPONSIBILITY TO INSTALL THE SUPPLIED WARNING LABEL WHERE VISIBLE TO ALL OCCUPANTS AND FORWARD THE SUPPLIED WARNING SHEET & AND INSTALLATION INSTRUCTIONS TO THE END USER. FOR MORE INFORMATION PLEASE REFER TO PART NO 15237 WARNING SHEET THAT IS INCLUDED WITH THESE INSTRUCTIONS.

IF YOU WOULD HAVE ANY QUESTIONS CONCERNING THIS KIT PLEASE CALL 724-430-2068 AND ASK FOR CUSTOMER SERVICE.

GROUND FORCE

Limited Lifetime Warranty

North America Only

GROUND FORCE WARRANTY (LIMITED) AND REMEDY LIMITATIONS

TO: WHOLESALERS, JOBBERS, RETAILERS, INSTALLERS, VEHICLE OWNERS.

Ground Force warrants to vehicle owners that its products are from material defects in workmanship and materials as long as the installing vehicle owner owns the vehicle. Ground Force makes no other warranty. Ground Force makes no application or use recommendations for its products and is not responsible for such decisions. Excluded from the warranty are the finish, poly boots, and steering Stabilizers* (90 days from purchase, only). Ground Force gas shocks Have a limited warranty: One year from date of purchase.

Ground Force retains the exclusive right to determine whether a Defect is material and replacement appropriate.

MATERIAL TO PARTICIPATION IN THIS WARRANTY PROGRAM IS THE DISCLAIMER OF ALL OTHER WARRANTIES, EXPRESS OR IMPLIED, INCLUDING MERCHANTABILITY AND FITNESS FOR A PARTICULAR PURPOSE.

THE SOLE REMEDY FOR ANY CLAIM OF PRODUCT DEFECT EITHER IN BREACH OF WARRANTY CONTRACT, NEGLIGENCE, STRICT LIABILITY OR OTHERWISE IS LIMITED TO

REPAIR OR REPLACEMENT OF THE PRODUCT AT GROUND FORCE'S DISCRETION.

EACH SELLER, INSTALLER AND USER OF THE PRODUCT AGREES THAT THIS LIMITATION OF REMEDIES IS A CONDITION OF THE SALE OF THE GROUND FORCE PRODUCT. EACH DISTRIBUTOR AND/OR SELLER OF GROUND FORCE PRODUCTS IS REQUIRED TO FORWARD WARRANTY/REMEDY INFORMATION TO EACH PURCHASER.

SELLERS, INSTALLERS AND USERS OF THIS PRODUCT(S) UNDERSTAND AND AGREE THAT REPAIR/REPLACEMENT REMEDY DOES NOT FAIL OF ITS ESSENTIAL PURPOSE. HOWEVER, IF DETERMINED TO FAIL OF ITS ESSENTIAL PURPOSE, SELLERS, INSTALLERS AND USERS AGREE, IN THE ALTERNATIVE, TO ACCEPT A REFUND OF THE PURCHASE PRICE AS A SOLE REMEDY.

Ground Force is not liable to sellers, installers or users of its products for incidental or consequential damages occasioned by any defect, malfunction, sale or use of any product, whether in breach of warranty, contract, strict liability or otherwise.

THIS DOES NOT APPLY TO PRODUCT WHICH HAVE BEEN ABUSED, MISUSED, IMPROPERLY INSTALLED OR TO VEHICLE OWNERS SUBSEQUENT TO INSTALLING PURCHASE.

VALIDATION AND CLAIM PROCEDURE

Answer you questions about Ground Force products by calling our hot line 724-430-2068. Take advantage of our warranty/remedy program, complete and return the warranty registration card attached, along with a copy of your receipt, within thirty days (30) of purchase.

To make a warranty claim, notify Ground Force at:

Attn: Ground Force Warranty Claim Department
PO Box 149
Mt. Braddock, PA 15465

Providing your name, address, vehicle make and model, product sold and installing dealer, if any. For your convenience, we suggest you keep this warranty/remedy certificate with you owner's manual!

To register Part, tear off card below and mail to:

Ground Force Registration Dept
PO Box 149
Mt Braddock, PA 15465

GROUND FORCE WARRANTY/REMEDY REGISTRATION

- Yes!! I want to take advantage of Ground Force's warranty/remedy program. I have read the warranty/remedy certificate and certify that the enclosed receipt evidences my purchase of a Ground Force product

Name: _____ Address: _____
Products: _____

Part # _____ Dealer/ Location _____ / _____ Installer _____
Date/Purchase _____ / _____ Make/Model: _____ / _____
VIN # _____ Year of Vehicle: _____ Vehicle GVW: _____

Signature: _____



WARNING

MODIFYING AN ORIGINAL EQUIPPED VEHICLE WILL RESULT IN A VEHICLE HANDLING DIFFERENTLY. ALL TYPES OF SUSPENSION MODIFICATIONS WILL AFFECT REACTION, RIDE, HANDLING AND WEAR AND TEAR RATE OF A VEHICLE AND ITS COMPONENTS. ABRUPT MANEUVERS, SHARP AND SUDDEN TURNS AND WEATHER CONDITIONS WILL INCREASE THE VEHICLE'S SUSCEPTIBILITY FOR LOSS OF CONTROL. DEATH AND SERIOUS INJURY COULD BE THE RESULT IF YOU FAIL TO OPERATE A MODIFIED VEHICLE SAFELY. KNOW AND FOLLOW THE LAWS OF THE STATES.

**GROUND FORCE Mailing
Address:**
P.O. Box 149
Mt. Braddock, PA 15465

**GROUND FORCE
Shipping Address:**
714 Braddock View Drive
Mt. Braddock, PA. 15465

(724) 430-2068
(724) 430-2075 Fax

ENCLOSED WITH THIS PRODUCT IS A WARNING LABEL WHICH IS TO BE AFFIXED
ON THE VISOR OF THE VEHICLE WHERE VISIBLE TO ALL OCCUPANTS.