

GROUND FORCE

02-05 DODGE RAM 1500 4WD FRONT TORSION BAR LEVELING KEY KIT INSTALLATION

READ INSTRUCTIONS COMPLETELY THROUGH BEFORE STARTING
FAILURE TO ADHERE TO THE INSTRUCTIONS WILL VOID ANY GROUND FORCE WARRANTY
IT IS RECOMMENDED THAT INSTALLATION BE DONE BY A QUALIFIED MECHANIC
REPLACE ALL STOCK PARTS THAT ARE DAMAGED OR WORN
INTERMIXING OF PARTS IS NOT RECOMMENDED AND WILL VOID THE WARRANTY
ALWAYS WEAR EYE PROTECTION

CHECK TO SEE THAT ALL PARTS LISTED ARE INCLUDED:

2- TORSION BAR KEY ADJUSTERS 1- WARNING DECAL 1- INSTRUCTION

MEASURE AND DOCUMENT THE VEHICLE HEIGHT FROM FLOOR TO FENDER LIP.

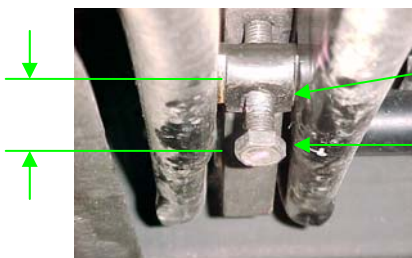
LF _____ RF _____ LR _____ RR _____

FRONT INSTALL

1. BEFORE GETTING UNDER VEHICLE, JACK THE FRONT OF VEHICLE UP AND PLACE JACK STANDS UNDER THE FRAME RAILS. LOWER THE VEHICLE ONTO JACK STANDS AND MAKE SURE STANDS ARE SECURELY HOLDING THE VEHICLE.
2. MAKE SURE THAT THE FRONT TIRES ARE OFF THE FLOOR WHILE DOING THIS PROCEDURE.
3. LOCATE THE FACTORY TORSION BAR KEYS IN THE CROSS-MEMBER AT THE END OF THE TORSION BAR UNDER THE CAB.

WARNING: THE TORSION BARS ARE UNDER PRESSURE. EXTREME CARE MUST BE TAKEN WHEN REMOVING AND INSTALLING THE TORSION BAR ADJUSTERS TO AVOID INJURY. FOLLOW THE TORSION BAR TOOL MANUFACTURERS LOADING / UN-LOADING INSTRUCTIONS.

4. TORSION BAR ADJUSTER REMOVAL PROCEDURE. MAKE SURE THE JACK STANDS ARE SECURE UNDER THE VEHICLE FRAME.
 - A. MARK THE TORSION BARS LEFT OR RIGHT AND FRONT OR REAR.
 - B. MEASURE AND DOCUMENT THE DISTANCE FROM THE OUTSIDE OF THE HEAD OF THE TORSION BAR ADJUSTING BOLT UP TO THE TORSION BAR RETAINING PLATE. DOCUMENT BOTH LEFT AND RIGHT ADJUSTING BOLT HEAD HEIGHTS.



TORSION BAR ADJUSTER
BOLT RETAINING PLATE.

TORSION BAR ADJUSTER
BOLT HEAD.

BOLT HEAD HEIGHT

L _____ R _____

C. USING A PROPERLY RATED TORSION BAR LOADER / UN-LOADER TOOL (KENT MOORE PART NO. 36202 OR ITS EQUIVALENT) INCREASE THE TENSION ON THE STOCK TORSION BAR ADJUSTING ARM. (FOLLOW THE TOOL MANUFACTURERS INSTRUCTIONS).

D. REMOVE THE ADJUSTING BOLT AND RETAINING PLATE.

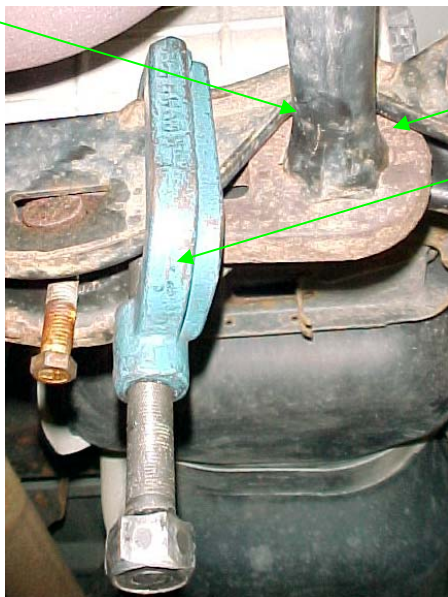
E. REMOVE THE TORSION BAR UN-LOADER TOOL.

F. SLIDE THE TORSION BAR REARWARD.

NOTE: YOU MAY HAVE TO TAP ON THE END OF THE TORSION BAR TO GET IT TO POP LOOSE FROM THE FACTORY KEY AND LOWER CONTROL ARM, AN AIR CHISEL WITH A PUNCH BIT WORKS WELL.

G. REMOVE THE STOCK TORSION BAR KEY.

H. REPEAT TO OTHER SIDE OF VEHICLE.



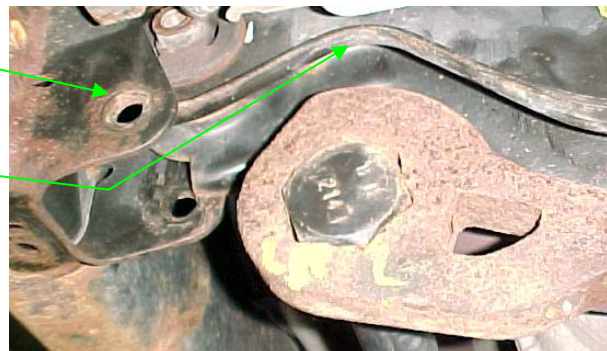
TORSION BAR KEY

TORSION BAR LOADER /
UN-LOADER

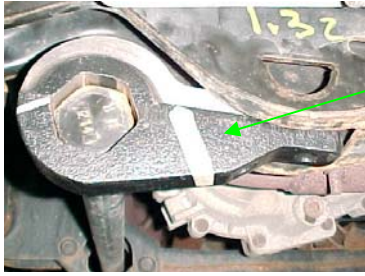
NOTE: ON SOME OF THESE VEHICLES THE TORSION BAR WILL BE RUSTED IN THE LOWER CONTROL ARM MOUNT AND VERY DIFFICULT TO REMOVE. IF YOU CAN'T GET THE TORSION BAR LOOSE FROM THE LOWER CONTROL ARM MOUNT YOU MAY NEED TO LOOSEN TORSION BAR CROSSMEMBER IN ORDER TO REPLACE THE TORSION BAR KEYS. MAKE SURE BOTH TORSION BARS ARE UNLOADED BEFORE THE CROSSMEMBER HARDWARE IS REMOVED. REMOVE AND REPLACE BOTH FACTORY KEYS WITH THE SUPPLIED REINDEXED KEYS. REINSTALL THE CROSSMEMBER TO THE FRAME USING THE FACTORY HARDWARE AND TOQUE THE HARDWARE TO SPEC. MOVE TO THE NEXT STEP IF YOU WERE ABLE TO REMOVE THE FACTORY KEYS WITHOUT REMOVING THE CROSSMEMBER.

TORSION BAR CROSSMEMBER
HARDWARE REMOVED

CROSSMEMBER MOVED UP FAR
ENOUGH TO REPLACE THE
TORSION BAR KEY.



5. NEW RE-INDEXED TORSION BAR KEY INSTALLATION PROCEDURE.



NEW RE-INDEXED TORSION BAR KEY BEING INSTALLED OVER THE STOCK TORSION BAR.

- A. INSTALL THE NEW TORSION BAR KEY ONTO THE TORSION BAR AND UP INTO THE CROSSMEMBER WITH THE BOTTOM OF NEW TORSION BAR KEY JUST HANGING OUT FROM THE BOTTOM OF THE CROSSMEMBER.
- B. SLIDE THE TORSION BAR FORWARD AND INTO THE LOWER CONTROL ARM.
- C. USING THE TORSION BAR LOADER / UN-LOADER TOOL INCREASE THE TENSION ON THE NEW TORSION BAR KEY (FOLLOW THE TOOL MANUFACTURES INSTRUCTIONS).
- D. INSTALL THE STOCK RETAINER PLATE THROUGH THE CROSSMEMBER WITH THE **NOTCHES** IN THE RETAINER POINTING **DOWN**.
- E. INSTALL THE STOCK ADJUSTING BOLT UP INTO THE RETAINING PLATE AND TURN THE TORSION BAR ADJUSTING BOLT IN UNTIL THERE IS ABOUT 3/16" MORE THREADS SHOWING THAT WAS DOCUMENTED IN THE STOCK MEASUREMENTS ON STEP 4 B. THIS WILL BE YOUR STARTING POINT FOR ADJUSTMENT.

(EXAMPLE THE STOCK TORSION BAR ADJUSTING BOLT ON THE LEFT SIDE WAS ADJUSTED AT 1.0" FROM THE BOTTOM OF THE ADJUSTING PLATE DOWN TO THE OUTSIDE OF THE TORSION BAR ADJUSTING BOLT HEAD AND WITH THE NEW TORSION BAR KEY THAT YOU INSTALLED YOU WILL HAVE 1 3/16" FROM THE BOTTOM OF THE ADJUSTING PLATE DOWN TO THE OUTSIDE OF THE TORSION BAR ADJUSTING BOLT HEAD.



CROSSMEMBER
RETAINED BLOCK
ADJUSTING BOLT

- 6. REPEAT TORSION BAR KEY INSTALLATION PROCEDURE TO THE OTHER SIDE OF VEHICLE.

NOTE: THE VEHICLE HEIGHT WILL NEED TO BE ADJUSTED WITH THE TIRES AND WHEELS THAT WERE ON THE VEHICLE WHEN MEASURED BEFORE KIT INSTALLATION.

NOTE: IF THE STOCK TORSION BAR ADJUSTING BOLTS WERE ADJUSTED FROM THE FACTORY SETTING YOUR ADJUSTMENT MAY VARY.

- 7. CHECK CLEARANCE OF ALL FRONT COMPONENTS WHILE SWEEPING THE STEERING COMPLETE LEFT TO RIGHT LOCK.
- 8. RECHECK THE TORQUE ON ALL NUTS AND BOLTS AFFECTED BY THIS PROCEDURE.

9. TAKE THE VEHICLE ON A SHORT TEST DRIVE TO GET THE VEHICLE SUSPENSION SETTLED INTO POSITION.
10. THE VEHICLE HEIGHT SHOULD NOT BE CHANGED MORE THAN 2.0 FROM THE FACTORY SETTING. OVER ADJUSTING THE TORSION BAR KEY ADJUSTING BOLTS WILL AFFECT RIDE QUALITY AND MAY CAUSE DAMAGE TO THE VEHICLES FRONT CV HALF SHAFTS, THEREFORE IT IS NOT RECOMMENDED.

NOTE: MAKING A HEIGHT ADJUSTMENT OF 1/8" AT THE TORSION BAR ADJUSTING BOLT HEAD WILL MAKE ABOUT 1/2" OF CHANGE AT THE WHEEL.

NOTE: IF YOU ARE INSTALLING THE HD KEYS TO COMPENSATE FOR THE ADDED WEIGHT OF A WINCH OR AFTERMARKET ACCESSORIES MAKE SURE TO HAVE THE ADDED ACCESSORIES ON THE VEHICLE WHILE MAKING THE FINAL ADJUSTMENTS TO THE TORSION BAR ADJUSTING BOLTS.

11. GO BACK AND CHECK THAT ALL INSTALLATION STEPS HAVE BEEN COMPLETED. CHECK THE TORQUE OF ALL NUTS AND BOLTS AFFECTED BY THIS PROCEDURE. RECHECK ALL NUTS AND BOLTS FOR TIGHTNESS AFTER THE FIRST 300 MILES AND AT EVERY REGULAR SERVICE INSPECTION.
12. ROAD TEST VEHICLE.

NOTE: IF ANY TORSION BAR ADJUSTMENTS ARE MADE, THE VEHICLE MUST BE TEST DRIVEN TO GET THE SUSPENSION HEIGHT SETTLED IN BEFORE RE-MEASURING.

NOTE: MAKE ALL TORSION BAR ADJUSTMENTS BEFORE HAVING THE VEHICLE FRONT END ALIGNMENT DONE.

13. THE VEHICLE NEEDS TO HAVE A FRONT END ALIGNMENT PERFORMED IMMEDIATELY AFTER THE INSTALLATION OF THIS KIT.

NOTE: YOUR HEADLIGHTS WILL NEED TO BE ADJUSTED TO THE PROPER SETTING AFTER THIS INSTALLATION IS COMPLETE.

WARNING: PART NO 15237 WARNING SHEET IS INCLUDED WITH THIS KIT, MAKE SURE ALL OPERATORS READ AND UNDERSTAND THE WARNING SHEET BEFORE OPERATING THIS MODIFIED VEHICLE.

WARNING: ENCLOSED WITH THIS PRODUCT IS A WARNING LABEL WHICH IS TO BE AFFIXED ON THE VISOR OF THE VEHICLE WHERE VISIBLE TO ALL OCCUPANTS.

GROUND FORCE

Limited Lifetime Warranty

North America Only

GROUND FORCE WARRANTY (LIMITED) AND REMEDY LIMITATIONS

TO: WHOLESALERS, JOBBERS, RETAILERS, INSTALLERS, VEHICLE OWNERS.

Ground Force warrants to vehicle owners that its products are from material defects in workmanship and materials as long as the installing vehicle owner owns the vehicle. Ground Force makes no other warranty. Ground Force makes no application or use recommendations for its products and is not responsible for such decisions. Excluded from the warranty are the finish, poly boots, and steering Stabilizers* (90 days from purchase, only). Ground Force gas shocks Have a limited warranty: One year from date of purchase.

Ground Force retains the exclusive right to determine whether a Defect is material and replacement appropriate.

MATERIAL TO PARTICIPATION IN THIS WARRANTY PROGRAM IS THE DISCLAIMER OF ALL OTHER WARRANTIES, EXPRESS OR IMPLIED, INCLUDING MERCHANTABILITY AND FITNESS FOR A PARTICULAR PURPOSE

THE SOLE REMEDY FOR ANY CLAIM OF PRODUCT DEFECT EITHER IN BREACH OF WARRANTY CONTRACT, NEGLIGENCE, STRICT LIABILITY OR OTHERWISE IS LIMITED TO

REPAIR OR REPLACEMENT OF THE PRODUCT AT GROUND FORCE'S DISCRETION.

EACH SELLER, INSTALLER AND USER OF THE PRODUCT AGREES THAT THIS LIMITATION OF REMEDIES IS A CONDITION OF THE SALE OF THE GROUND FORCE PRODUCT. EACH DISTRIBUTOR AND/OR SELLER OF GROUND FORCE PRODUCTS IS REQUIRED TO FORWARD WARRANTY/REMEDY INFORMATION TO EACH PURCHASER.

SELLERS, INSTALLERS AND USERS OF THIS PRODUCT(S) UNDERSTAND AND AGREE THAT REPAIR/REPLACEMENT REMEDY DOES NOT FAIL OF ITS ESSENTIAL PURPOSE. HOWEVER, IF DETERMINED TO FAIL OF ITS ESSENTIAL PURPOSE, SELLERS, INSTALLERS AND USERS AGREE, IN THE ALTERNATIVE, TO ACCEPT A REFUND OF THE PURCHASE PRICE AS A SOLE REMEDY.

Ground Force is not liable to sellers, installers or users of its products for incidental or consequential damages occasioned by any defect, malfunction, sale or use of any product, whether in breach of warranty, contract, strict liability or otherwise

THIS DOES NOT APPLY TO PRODUCT WHICH HAVE BEEN ABUSED, MISUSED, IMPROPERLY INSTALLED OR TO VEHICLE OWNERS SUBSEQUENT TO INSTALLING PURCHASE.

VALIDATION AND CLAIM PROCEDURE

Answer you questions about Ground Force products by calling our hot line 724-430-2068. Take advantage of our warranty/remedy program, complete and return the warranty registration card attached, along with a copy of your receipt, within thirty days (30) of purchase.

To make a warranty claim, notify Ground Force at:

Attn: Ground Force Warranty Claim Department
PO Box 149
Mt. Braddock, PA 15465

Providing your name, address, vehicle make and model, product sold and installing dealer, if any. For your convenience, we suggest you keep this warranty/remedy certificate with you owner's manual!

To register Part, tear off card below and mail to:

Ground Force Registration Dept
PO Box 149
Mt Braddock, PA 15465

GROUND FORCE WARRANTY/REMEDY REGISTRATION

- Yes!! I want to take advantage of Ground Force's warranty/remedy program. I have read the warranty/remedy certificate and certify that the enclosed receipt evidences my purchase of a Ground Force product

Name: _____ Address: _____
Products: _____

Part # _____ Dealer/ Location _____ / _____ Installer _____
Date/Purchase _____ / _____ Make/Model: _____ / _____
VIN # _____ Year of Vehicle: _____ Vehicle GVW: _____

Signature: _____

Part #15080
REV. B



WARNING

MODIFYING AN ORIGINAL EQUIPPED VEHICLE WILL RESULT IN A VEHICLE HANDLING DIFFERENTLY. ALL TYPES OF SUSPENSION MODIFICATIONS WILL AFFECT REACTION, RIDE, HANDLING AND WEAR AND TEAR RATE OF A VEHICLE AND ITS COMPONENTS. ABRUPT MANEUVERS, SHARP AND SUDDEN TURNS AND WEATHER CONDITIONS WILL INCREASE THE VEHICLE'S SUSCEPTIBILITY FOR LOSS OF CONTROL. DEATH AND SERIOUS INJURY COULD BE THE RESULT IF YOU FAIL TO OPERATE A MODIFIED VEHICLE SAFELY. KNOW AND FOLLOW THE LAWS OF THE STATES.

**GROUND FORCE Mailing
Address:**

P.O. Box 149
Mt. Braddock, PA 15465

**GROUND FORCE
Shipping Address:**

714 Braddock View Drive
Mt. Braddock, PA. 15465

(724) 430-2068
(724) 430-2075 Fax

ENCLOSED WITH THIS PRODUCT IS A WARNING LABEL WHICH IS TO BE AFFIXED
ON THE VISOR OF THE VEHICLE WHERE VISIBLE TO ALL OCCUPANTS.